

**EXCELON® Series 74
Pressure Relief Valve
3/8", 1/2", 3/4" Port Sizes**

- **EXCELON design allows in-line or modular installation**
- **Push to lock adjusting knob with tamper resistant accessory**
- **Easily disassembled for servicing without removal from air line**
- **Helps protect air operated equipment from over pressure by retarding excessive pressure build up**



Technical Data

Fluid: compressed air

Operating Temperature*: -20° to 80°C

* Air supply must be dry enough to avoid ice formation at temperatures below 2°C.

Gauge ports:

1/4" PTF with PTF main ports

1/4" ISO Rc with ISO Rc main ports

1/8" ISO Rc with ISO Rc main ports

Materials:

Body: Aluminium

Bonnet: Aluminium

Valve: Aluminium and Nitrile

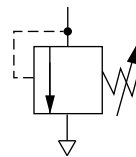
Elastomers: Nitrile

Bottom plug: Acetal

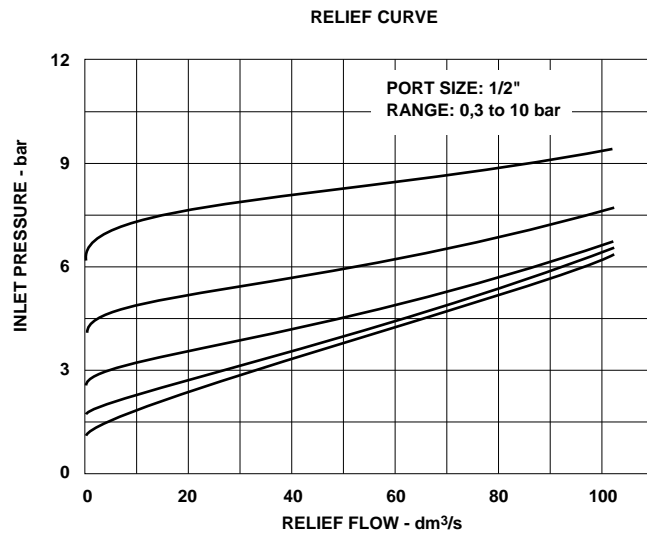
Ordering Information

See *Ordering Information* on following pages.

ISO Symbols



Typical Performance Characteristics



Ordering Information. Models listed include ISO G parallel threads, knob adjustment and a 0,3 to 10 bar relief pressure adjustment range*.

Port Size	Model	Weight kg
G3/8	V74G-3GK-NMN	0,69
G1/2	V74G-4GK-NMN	0,68
G3/4	V74G-6GK-NMN	0,67

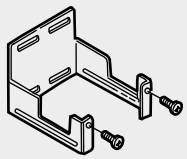
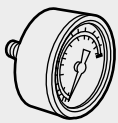

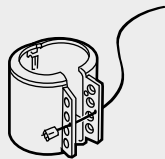
Alternative Models

Threads	Substitute	V 7 4 G - ★ ★ ★ - N ★ ★		Gauge	Substitute
PTF	A			With (Ø 50 mm)	G
ISO Rc taper	B			Without	N
ISO G parallel	G				
Adjustment	Substitute			Relief Pressure Adjustment Range*	Substitute
Knob	K			0,3 to 4 bar	F
T-bar	T			0,3 to 10 bar	M
				0,7 to 17 bar**	S

* Relief valve can be adjusted to pressures in excess of, and less than, those specified. Do not use these units to control pressures outside of the specified ranges.

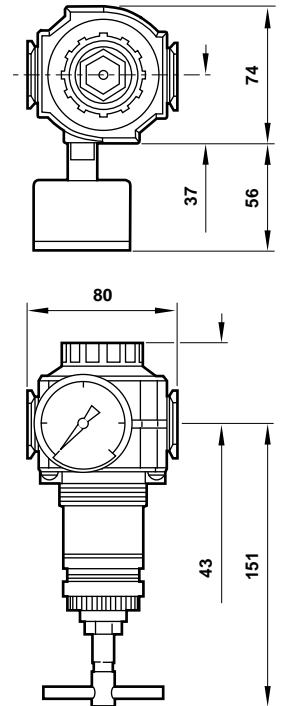
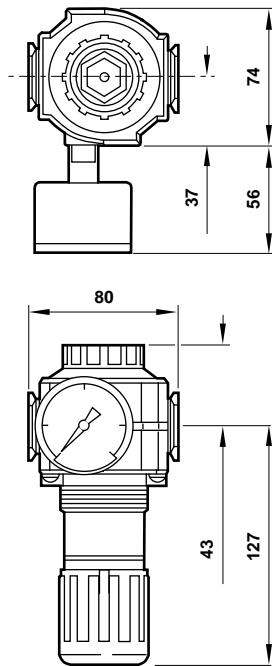
** Units with 17 bar relief pressure range are available only with the T-bar adjustment; therefore substitute **T** at the 7th position and **S** at the 12th position.

Accessories

			
Wall Mounting Bracket	Ø 50 mm Gauge R1/8 Connection	Metal Panel Nut	Tamper Resistant Cover & Seal Wire††
4324-50	4 bar: 18-013-011 10 bar: 18-013-013 25 bar: 18-013-014	4348-89	4355-51
			Seal Wire: 2117-01

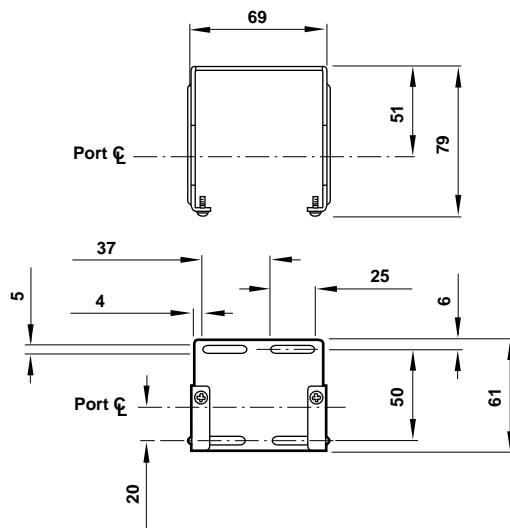
†† Use padlock with shackle up to 8 mm (0.3") in diameter.

Panel mounting hole diameter:
52 mm
Panel thickness:
2 to 6 mm



Bracket Mounting

Use 5 mm screws to mount bracket to wall.



Bracket Kit Reference

Model	Part No.
All Models	4324-50

Service Kits

Item	Type	Part Number
Service kit	Diaphragm & Seal	4384-700

Service kit includes diaphragm, bottom plug o-ring.

Warning

These products are intended for use in industrial compressed air systems only. Do not use these products where *pressures* and *temperatures* can exceed those listed under **Technical Data**.

Before using these products with fluids other than those specified, for non-industrial applications, life-support systems, or other applications not within published specifications, consult NORGREN.

Through misuse, age, or malfunction, components used in fluid power systems can fail in various modes. The system designer is warned to consider the failure modes of all component parts used in fluid power systems and to provide adequate safeguards to prevent personal injury or damage to equipment in the event of such failure.

System designers must provide a warning to end users in the system instructional manual if protection against a failure mode cannot be adequately provided.

System designers and end users are cautioned to review specific warnings found in instruction sheets packed and shipped with these products.