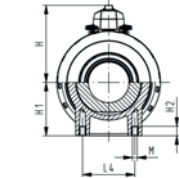
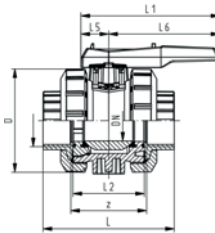
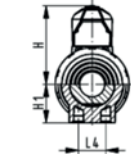
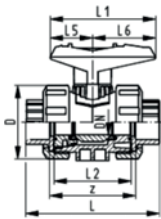


Ball valves 546

Ball valve type 546 PVC-U With solvent cement sockets Inch BS



Model:

- For easy installation and removal
- z-dimension, valve end and union nut are **not compatible** with type 346 (DN10/15-50) resp. type 370 (DN65-100)
- Ball seals PTFE
- Without mounting inserts

Option:

- Individual configuration of the valve (see diagram)
- Multifunctional module with integrated limit switches
- Pneumatic or electric actuators from +GF+

Inch	DN [mm]	PN	kv-value ($\Delta p=1$ bar) [l/min]	EPDM Code	FPM Code	kg
3/8	10	16	71	161 546 201	161 546 211	0.150
1/2	15	16	185	161 546 202	161 546 212	0.150
3/4	20	16	350	161 546 203	161 546 213	0.230
1	25	16	700	161 546 204	161 546 214	0.336
1 1/4	32	16	1000	161 546 205	161 546 215	0.585
1 1/2	40	16	1600	161 546 206	161 546 216	0.815
2	50	16	3100	161 546 207	161 546 217	1.577
	65	16	5000	161 546 008	161 546 018	3.794
3	80	16	7000	161 546 209	161 546 219	7.400
4	100	16	11000	161 546 210	161 546 220	11.600

Inch	D [mm]	H [mm]	H1 [mm]	L [mm]	L1 [mm]	L2 [mm]	L4 [mm]	L5 [mm]	L6 [mm]	z [mm]
3/8	50	57	27	92	77	56	25	32	45	60
1/2	50	57	27	95	77	56	25	32	45	60
3/4	58	67	30	110	97	65	25	39	58	69
1	68	73	36	123	97	71	25	39	58	75
1 1/4	84	90	44	146	128	85	45	54	74	89
1 1/2	97	97	51	157	128	89	45	54	74	97
2	124	116	64	183	152	101	45	66	87	110
	166	149	85	233	270	136	70	64	206	144
3	200	161	105	254	270	141	70	64	206	151
4	238	178	123	301	320	164	120	64	256	174