

BA

End stops

The end stops are mounted at the extremity of the terminal board assembly, giving additional support to the terminal blocks as markers. For various types of marking, refer to the marker section.

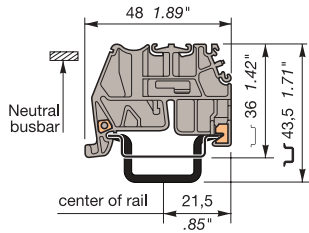
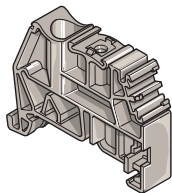
BADL

Screwless, snaps on rail without tool. V0 grey polyamide for DIN 3 rail. Maintained in place and locked on the rail with metal grips.

To reposition, do not slide on the rail. Withdraw and snap again (screwdriver DIA. 6,5 mm .256" max.)

Thickness: 9 mm .354"

BADL grey **0199 408.02**



BAM

Multi-rail end stop of grey V2 or V0 polyamide equipped with 2 blocking screws allows mounting on PR1, PR3, PR4 and PR5 (DIN 1, DIN 3) rails.

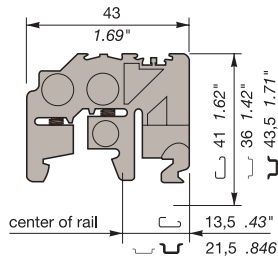
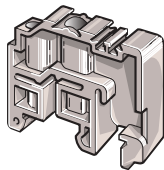
Recommended screwdriver: DIA. 5,5 mm .217"

Recommended torque:

Min. 0,8 mN - Max. 1 mN

Min. 7.1 lb.in - Max. 8.9 lb.in

Thickness: 9,1 mm .358"



BAM grey **0103 002.26**

BAM V0 beige **0199 306.03**

BAMH

Multi-rail end stop of V2 or V0 polyamide equipped with 2 blocking screws allows mounting on PR1, PR3, PR4 and PR5 (DIN 1, DIN 3) rails.

Suitable for double deck blocks.

Recommended screwdriver:

DIA. 5,5 mm .217"

Recommended torque:

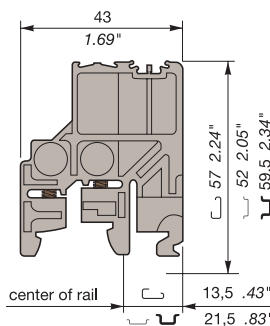
Min. 0,8 mN - Max. 1 mN

Min. 7.1 lb.in - Max. 8.9 lb.in

Thickness: 9,1 mm .358"

BAMH grey **0114 836.00**

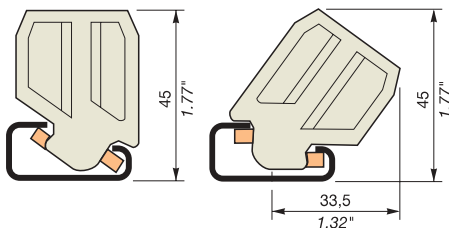
BAMH V0 beige **0194 836.01**



BAR

Reversible end stop of beige polyamide with blocking bracket. To be mounted vertically or at a 30° angle, on PR1 rail only.

Thickness: 10 mm .394"



BAR beige **0164 519.24**

BADH, BAEH

Tall end stop of polyamide, for use with M 70/22, M 95/26 blocks, power blocks, double or triple deck blocks, and electronic interface modules series 7 000, 8 000, 10 000, 11 000 and 30 000.

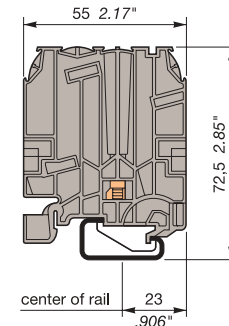
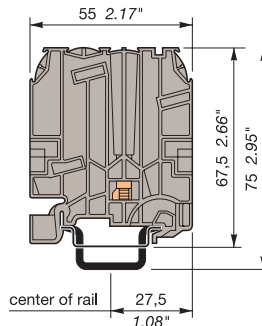
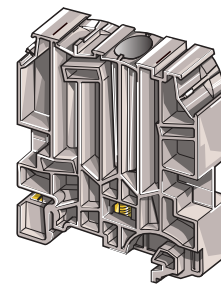
Snaps on rail - Easy mounting and repositioning, even between 2 blocks.

Recommended screwdriver: DIA. 5,5 mm .217"

Recommended torque: Min. 1,2 Nm - Max. 1,4 Nm

Min. 10.6 lb.in - Max. 12.3 lb.in

Thickness: 12 mm .472"



BADH grey **0116 900.27**

BAEH grey **0116 934.04**

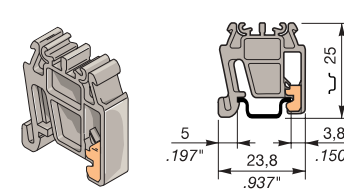
BAEH beige **0196 934.05**

BADRL

End stop of V0 grey polyamide snaps on DIN 2 rail, automatically maintained in place with metal grips.

To reposition, do not slide on the rail. Withdraw and snap again (screwdriver DIA. 4 mm .157" max.)

Thickness: 6,5 mm .256"



BADRL grey **0199 420.21**

BAH11



To be mounted on symmetrical rail type 1 12,2 x 5,1 mm .480 x .201", according to NFC 93 461 standard.

Thickness: 7,1 mm .280"

BAH11 **0164 659.10**

BAH21



To be mounted on strengthened symmetrical rail type 2 only: 21,8 x 8,2 mm .858 x .323", according to NFC 93 461 standard.

Thickness: 7,1 mm .280"

BAH21 **0167 489.22**

BAH22

To be mounted on strengthened symmetrical rail type 2 only 21,8 x 8,2 mm .858 x .323", according to NFC 93 461 standard.

Thickness: 7,1 mm .280"

BAH22 **0164 655.04**



BAH24

To be mounted on strengthened symmetrical rail type 2 only 21,8 x 8,2 mm .858 x .323", according to NFC 93 461 standard.

Thickness: 7,1 mm .280"

BAH24 **0168 355.13**

