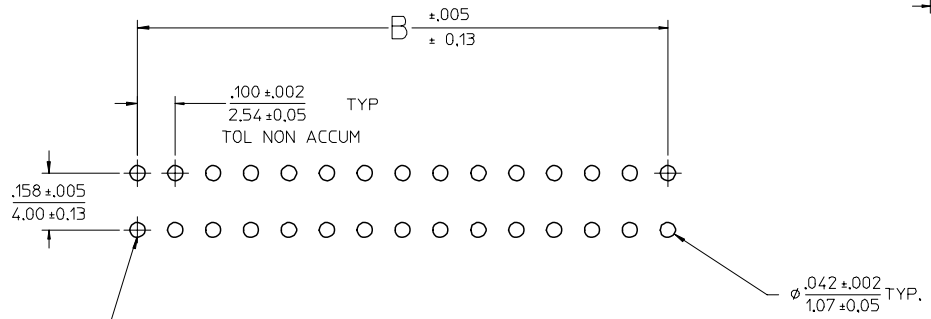
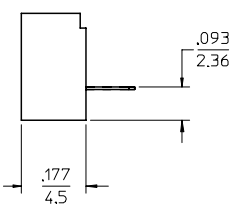
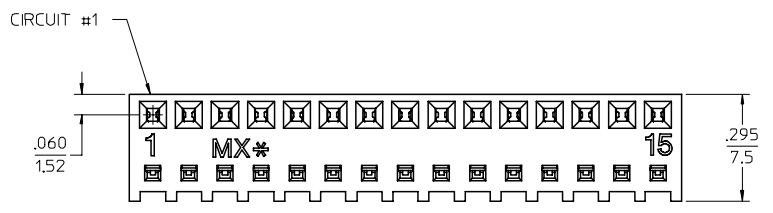
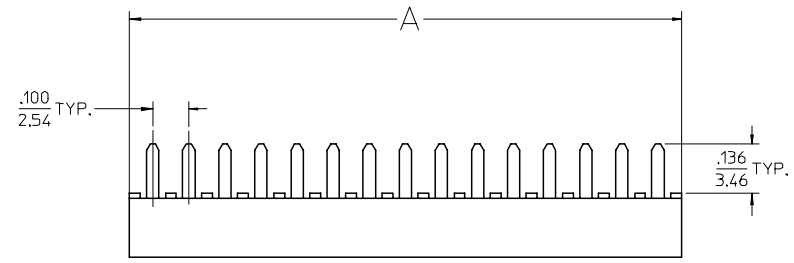
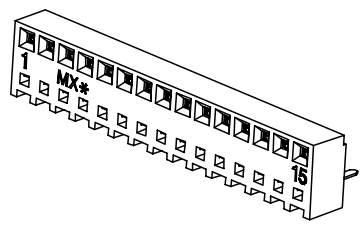


12 11 10 9 8 7 6 5 4 3 2 44812

J
I
H
G
F
E
D
C
B
A

CKTS	DIM A	DIM B
2	.230 5.84	.100 2.54
3	.330 8.38	.200 5.08
4	.430 10.92	.300 7.62
5	.530 13.46	.400 10.16
6	.630 16.00	.500 12.70
7	.730 18.54	.600 15.24
8	.830 21.08	.700 17.78
9	.930 23.62	.800 20.32
10	1.030 26.16	.900 22.86
11	1.130 28.70	1.000 25.40
12	1.230 31.24	1.100 27.94
13	1.330 33.78	1.200 30.48
14	1.430 36.32	1.300 33.02
15	1.530 38.86	1.400 35.56
16	1.630 41.40	1.500 38.10



PCB LAYOUT : COMPONENT SIDE SHOWN
RECOMMENDED PCB THK: .062/1.57

NOTES :

- MATERIAL -
HOUSING : HIGH TEMP NYLON, GLASS-FILLED, UL94V-0. COLOR - BLACK
TERMINAL : MODIFIED TIN/BRASS ALLOY
- FINISH - (SEE CHART)
A-TIN: 200 MI MINIMUM
B-SELECT GOLD: 15 MI MIN., SELECT TIN : 100 MI MIN., OVER NICKEL
C-SELECT GOLD: 30 MI MIN., SELECT TIN : 100 MI MIN., OVER NICKEL

* THE PRIMARY SHIPPING CARTON WILL BE LABELED "COMPLIANT TO RoHS DIRECTIVE 2002/95/EC AND ELV ANNEX II OF DIRECTIVE 2000/53/EC".

CARTONS WITHOUT THIS LABEL MAY CONTAIN TIN/LEAD.

- PRODUCT SPECIFICATION : PS-44812-001
- PACKAGING SPECIFICATION : TRAY PACK PER PK-44812-001
- 15 CIRCUIT PART SHOWN SEE SHEET 2 FOR OTHER CIRCUIT SIZES.

REV TIN/LEAD TO TIN EC NO: UCP2004-1964 DRWN: SMUELLER2004/04/13 CHKD: 2004/04/13 APPR: YMARGULI 2004/04/14	QUALITY SYMBOLS ▽-0 ◁-0	GENERAL TOLERANCES (UNLESS SPECIFIED)		SCALE 4:1	DESIGN UNITS INCH	THIRD ANGLE PROJECTION	REVISE ON CAD ONLY	
			mm	INCH	DIMENSION STYLE IN/MM		TITLE	
		4 PLACES	±---	±---	DRAWN BY	DATE	KK 100 PCB CONN ASSY LOW PROFILE	
		3 PLACES	±---	±.010	MUELLER	2001/09/22		
	2 PLACES	±0.25	±.015	CHECKED BY	DATE	MOLEX INCORPORATED		
	1 PLACE	±0.38	±---	MUELLER	2001/09/23			
		ANGULAR ±1/2°		APPROVED BY	DATE	MATERIAL NO.	DOCUMENT NO.	
		DRAFT WHERE APPLICABLE		MARGULIS	2001/09/24	SEE CHART	SD-44812-001	
		MUST REMAIN WITHIN DIMENSIONS		THIS DRAWING CONTAINS INFORMATION THAT IS PROPRIETARY TO MOLEX INCORPORATED AND SHOULD NOT BE USED WITHOUT WRITTEN PERMISSION		SHEET NO.	1 OF 2	

11 10 9 8 7 6 5 4 3 2 1

J
I
H
G
F
E
D
C
B
A

J
I
H
G
F
E
D
C
B
A

FINISH: TIN	
CKTS	MATERIAL NO.
2	44812-0002
3	44812-0003
4	44812-0004
5	44812-0005
6	44812-0006
7	44812-0007
8	44812-0008
9	44812-0009
10	44812-0010
11	44812-0011
12	44812-0012
13	44812-0013
14	44812-0014
15	44812-0015
16	44812-0016

FINISH: 15 GOLD	
CKTS	MATERIAL NO.
2	44812-0020
3	44812-0021
4	44812-0022
5	44812-0023
6	44812-0024
7	44812-0025
8	44812-0026
9	44812-0027
10	44812-0028
11	44812-0029
12	44812-0030
13	44812-0031
14	44812-0032
15	44812-0033
16	44812-0034

FINISH: 30 GOLD	
CKTS	MATERIAL NO.
2	44812-0040
3	44812-0041
4	44812-0042
5	44812-0043
6	44812-0044
7	44812-0045
8	44812-0046
9	44812-0047
10	44812-0048
11	44812-0049
12	44812-0050
13	44812-0051
14	44812-0052
15	44812-0053
16	44812-0054

EC NO: UCP2004-1964 DRWN: SMUELLER2004/04/13 CHKD: 2004/04/13 APPR: YMARGULI 2004/04/14	DESCRIPTION REV	QUALITY SYMBOLS	GENERAL TOLERANCES (UNLESS SPECIFIED)	SCALE 1:1	DESIGN UNITS INCH	THIRD ANGLE PROJECTION	REVISE ON CAD ONLY										
		▽ - 0 ◻ - 0	<table border="1"> <tr><th>mm</th><th>INCH</th></tr> <tr><td>4 PLACES ± ---</td><td>± ---</td></tr> <tr><td>3 PLACES ± ---</td><td>± .010</td></tr> <tr><td>2 PLACES ± 0.25</td><td>± .015</td></tr> <tr><td>1 PLACE ± 0.38</td><td>± ---</td></tr> </table>	mm	INCH	4 PLACES ± ---	± ---	3 PLACES ± ---	± .010	2 PLACES ± 0.25	± .015	1 PLACE ± 0.38	± ---	DIMENSION STYLE IN/MM	TITLE KK 100 PCB CONN ASSY LOW PROFILE		
			mm	INCH													
			4 PLACES ± ---	± ---													
3 PLACES ± ---	± .010																
2 PLACES ± 0.25	± .015																
1 PLACE ± 0.38	± ---																
ANGULAR ±1/2° DRAFT WHERE APPLICABLE MUST REMAIN WITHIN DIMENSIONS	DRAWN BY DATE MUELLER 2001/09/22 CHECKED BY DATE MUELLER 2001/09/23 APPROVED BY DATE MARGULIS 2001/09/24	MATERIAL NO. SEE CHART DOCUMENT NO. SD-44812-001 SHEET NO. 2 OF 2															
THIS DRAWING CONTAINS INFORMATION THAT IS PROPRIETARY TO MOLEX INCORPORATED AND SHOULD NOT BE USED WITHOUT WRITTEN PERMISSION							C										