

# The ETP-MINI bush

The ETP-MINI bush has been developed for smaller applications, down to shaft sizes of 6mm. Its powerful grip is produced by means of sliding tapers.

**Easy to mount and dismount**

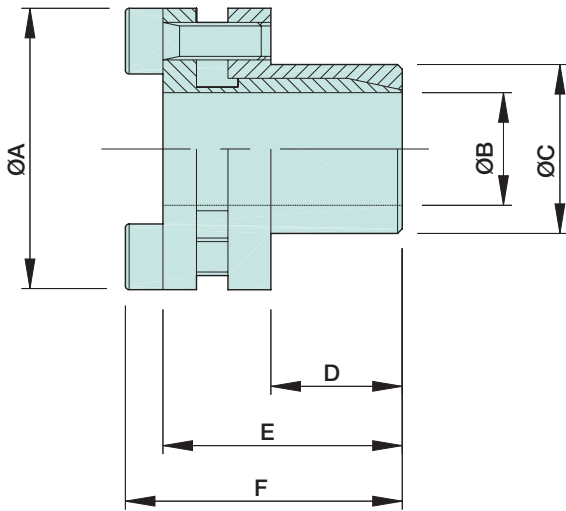
**The only locking assembly for small applications**

**Cost effective**

**Transmits high torques**

**New ETP-Mini R stainless steel ranges**

**H8 hub tolerances, K6 to h10 shaft tolerances for all sizes.**



ETP MINI shaft	Rated torque Tr Nm	Max axial force Fr kN	Wt g	Inertia Inertia kgm <sup>-2</sup> x10 <sup>-6</sup>	A	B	C	D	E	F	No. of Screws	Screw tightening torque Nm	Hex key size mm	Stockline No.
Mini 6	5	1.7	30	2.1	25	6	14	10	19	22	2	2	2.5	<a href="#">R6-111 139</a>
Mini 8	17	4.4	40	3.3	27	8	15	12	21.5	25.5	2	4	3	<a href="#">R6-111 147</a>
Mini 9	20	4.4	50	4.4	28	9	16	14	24	28	2	4	3	<a href="#">R6-111 155</a>
Mini 10	23	4.4	50	4.3	28	10	16	14	24	28	2	4	3	<a href="#">R6-56 441</a>
Mini 11	25	4.4	60	6.2	30	11	18	14	25.5	29.5	2	4	3	<a href="#">R6-111 171</a>
Mini 12	27	4.4	60	6.1	30	12	18	14	25.5	29.5	2	4	3	<a href="#">R6-111 18X</a>
Mini 14	48	6.5	80	13.2	35	14	22	15	27.5	31.5	3	4	3	<a href="#">R6-212 786</a>
Mini 1/4in	6	1.7	30	2.1	25	1/4in	14	10	19	22	2	2	2.5	<a href="#">R6-111 112</a>
Mini 3/8in	22	4.4	50	4.4	28	3/8in	16	14	24	28	2	4	3	<a href="#">R6-111 120</a>
Mini 1/2in	29	4.4	60	6.0	30	1/2in	18	14	25.5	29.5	2	4	3	<a href="#">R6-159 474</a>