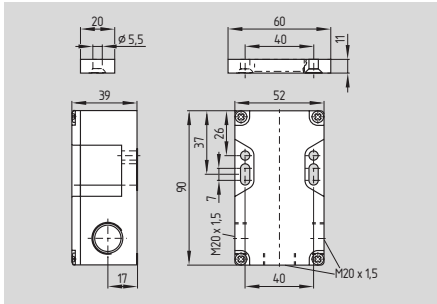


Safety sensors

BNS 16



- Thermoplastic enclosure
- With coding
- Long life, no mechanical wear
- Protection class IP 67
- Intensive to transverse misalignment
- Concealed mounting possible
- Intensive to soiling
- Wiring compartment
- Suitable for food processing industry
- Mounting dimensions identical to AZ 16
- 3 cable entries M20 x 1.5

Technical data

Standards:	IEC 60947-5-3 BG-GS-ET-14
Design:	rectangular
Enclosure:	glass-fibre reinforced thermoplastic, self-extinguishing
Protection class:	IP 67 to EN 60529
Termination:	screw terminals
Cable section:	max. 2 x 1.5 mm ² (incl. conductor ferrules)
Cable entry:	3 x M20 x 1.5
Mode of operation:	magnetic
Actuating magnet:	BPS 16, coded
Control category:	up to 4 to EN 954-1 in combination with a safety monitoring module
Classification:	up to PDF-M to IEC 60947-5-3 in combination with a safety monitoring module
S _{ao} :	8 mm
S _{ar} :	18 mm
Switching conditions indicator:	–
Max. switching voltage without LED:	100 VAC/DC
Max. switching current without LED:	400 mA
Max. switching capacity without LED:	10 W
Ambient temperature:	– 25 °C ... + 70 °C
Storage and transport temperature:	– 25 °C ... + 70 °C
Max. switching frequency:	5 Hz
Resistance to shock:	30 g / 11 ms
Resistance to vibration:	10 ... 55 Hz, amplitude 1 mm

Contact variants

1 NO / 2 NC
 S13 → S14
 S21 → S22
 S31 → S32

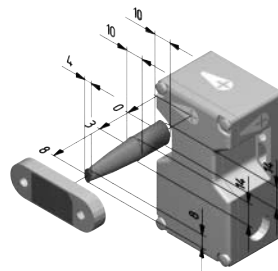


Ordering details

BNS 16-12z-①

No.	Replace	Description
①	V	Actuating planes: axial
	R	right
	L	left
	D	front (cover)
	U	rear

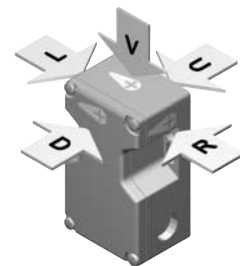
Note



Enabling zone

Actuator BPS 16 must be ordered separately.

Note

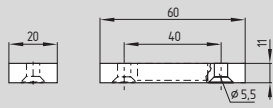


5 different directions of actuation: cover, front and below, right and left

Contact symbols shown for the closed condition of the guard device.

Safety sensors

System components



Actuating magnet

Ordering details

Actuating magnet

BPS 16