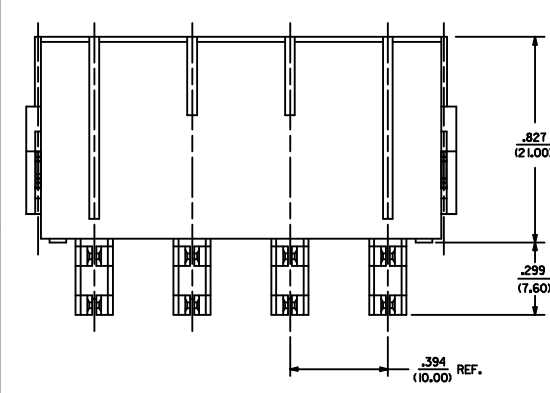
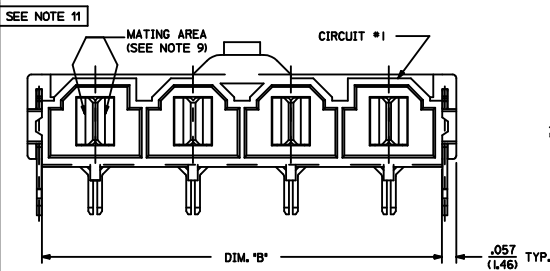


ITEM NUMBER	CKT. SIZE	DIM. 'A'	DIM. 'B'	DIM. 'C'	TERMINAL PLATING
42820-2212	2	.138/(3.50)	.823/(20.90)	.071/(1.80)	
42820-2219	2	.136/(3.50)	.823/(20.90)	.071/(1.80)	
42820-2222	2	.201/(5.10)	.823/(20.90)	.102/(2.60)	
42820-2232	2	.201/(5.10)	.823/(20.90)	.134/(3.40)	
42820-2239	2	.201/(5.10)	.823/(20.90)	.134/(3.40)	
42820-2242	2	.327/(8.30)	.823/(20.90)	.259/(6.58)	
42820-3212	3	.138/(3.50)	1.217/(30.90)	.071/(1.80)	
42820-3222	3	.201/(5.10)	1.217/(30.90)	.102/(2.60)	
42820-3229	3	.201/(5.10)	1.217/(30.90)	.102/(2.60)	
42820-3232	3	.201/(5.10)	1.217/(30.90)	.134/(3.40)	
42820-3242	3	.327/(8.30)	1.217/(30.90)	.259/(6.58)	
42820-4212	4	.138/(3.50)	1.610/(40.90)	.071/(1.80)	OVERALL BRIGHT TIN
42820-4222	4	.201/(5.10)	1.610/(40.90)	.102/(2.60)	
42820-4232	4	.201/(5.10)	1.610/(40.90)	.134/(3.40)	
42820-4242	4	.327/(8.30)	1.610/(40.90)	.259/(6.58)	
42820-5212	5	.138/(3.50)	2.004/(50.90)	.071/(1.80)	
42820-5222	5	.201/(5.10)	2.004/(50.90)	.102/(2.60)	
42820-5232	5	.201/(5.10)	2.004/(50.90)	.134/(3.40)	
42820-5242	5	.327/(8.30)	2.004/(50.90)	.259/(6.58)	
42820-6212	6	.138/(3.50)	2.389/(60.90)	.071/(1.80)	
42820-6222	6	.201/(5.10)	2.389/(60.90)	.102/(2.60)	
42820-6229	6	.201/(5.10)	2.389/(60.90)	.102/(2.60)	
42820-6232	6	.201/(5.10)	2.389/(60.90)	.134/(3.40)	
42820-6242	6	.327/(8.30)	2.389/(60.90)	.259/(6.58)	
42820-2332	2	.201/(5.10)	.823/(20.90)	N/A	
42820-2342	2	.327/(8.30)	.823/(20.90)	N/A	
42820-2213	2	.138/(3.50)	.823/(20.90)	.071/(1.80)	
42820-2223	2	.201/(5.10)	.823/(20.90)	.102/(2.60)	
42820-2233	2	.201/(5.10)	.823/(20.90)	.134/(3.40)	
42820-2243	2	.327/(8.30)	.823/(20.90)	.259/(6.58)	
42820-3213	3	.138/(3.50)	1.217/(30.90)	.071/(1.80)	
42820-3228	3	.138/(3.50)	1.217/(30.90)	.102/(2.60)	
42820-3223	3	.201/(5.10)	1.217/(30.90)	.102/(2.60)	
42820-3233	3	.201/(5.10)	1.217/(30.90)	.134/(3.40)	
42820-3243	3	.327/(8.30)	1.217/(30.90)	.259/(6.58)	
42820-4213	4	.138/(3.50)	1.610/(40.90)	.071/(1.80)	SELECT GOLD IN CONTACT AREA
42820-4223	4	.201/(5.10)	1.610/(40.90)	.102/(2.60)	SELECT MATTE TIN ON SOLDER TAILS
42820-4233	4	.201/(5.10)	1.610/(40.90)	.134/(3.40)	
42820-4243	4	.327/(8.30)	1.610/(40.90)	.259/(6.58)	
42820-5213	5	.138/(3.50)	2.004/(50.90)	.071/(1.80)	
42820-5223	5	.201/(5.10)	2.004/(50.90)	.102/(2.60)	
42820-5233	5	.201/(5.10)	2.004/(50.90)	.134/(3.40)	
42820-5243	5	.327/(8.30)	2.004/(50.90)	.259/(6.58)	
42820-6213	6	.138/(3.50)	2.389/(60.90)	.071/(1.80)	
42820-6223	6	.201/(5.10)	2.389/(60.90)	.102/(2.60)	
42820-6233	6	.201/(5.10)	2.389/(60.90)	.134/(3.40)	
42820-6243	6	.327/(8.30)	2.389/(60.90)	.259/(6.58)	



LEGEND:



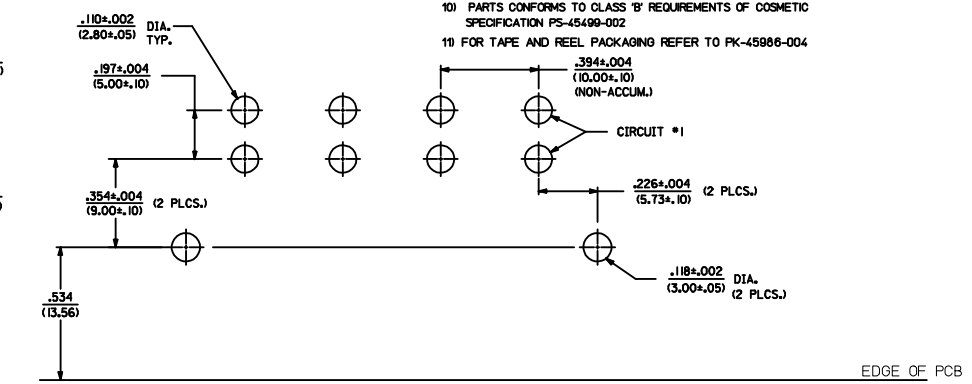
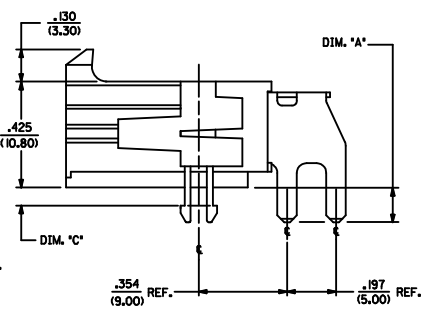
- MOUNTING OPTION
- 1 = FLANGES (SEE DWG. SDA-42820-***)
 - 2 = RETENTION CLIP
 - 3 = NO RETENTION CLIP

P.C. BOARD THICKNESS

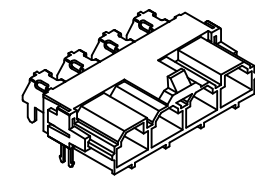
- 1 = .062/(1.57) NOMINAL
- 2 = .093/(2.36) NOMINAL
- 3 = .125/(3.18) NOMINAL
- 4 = .250/(6.35) NOMINAL

PLATING

- 2 OR 9 = OVERALL BRIGHT TIN OVER NICKEL
- 3 OR 8 = SELECT GOLD IN CONTACT AREA
SELECT MATTE TIN ON SOLDER TAILS OVER NICKEL



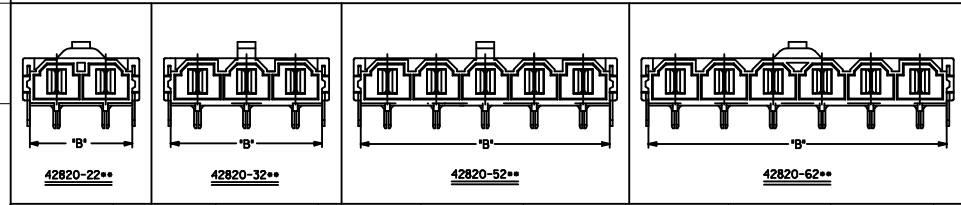
RECOMMENDED P.C. BOARD PLATED-THRU HOLE LAYOUT (4 CKT. SHOWN FOR REF.)



HEADER WITH RT. ANGLE TERMINAL & CLIP ISO VIEW

NOTES:

- 1) MATERIAL: HOUSING MATERIAL: 30% GLASS-FILLED NYLON 4/6, U.L. 94V-0, COLOR: BLACK. TERMINAL MATERIAL: ALLOY 15L
- 2) FINISH: 2 = .000100/(.00254) MIN. *TIN OVER .000050/(.00127) MIN. NICKEL. 3 = .000030/(.00076) MIN. SELECT GOLD IN CONTACT AREA. .000100/(.00254) MIN. SELECT *TIN ON SOLDER TAILS OVER .000050/(.00127) MIN. NICKEL. * THE PRIMARY SHIPPING CARTON WILL BE LABELED "COMPLIANT TO RoHS DIRECTIVE 2002/95/EC AND ELV ANNEX II OF DIRECTIVE 2000/53/EC". CARTONS WITHOUT THIS LABEL MAY CONTAIN PRODUCT WITH TIN-LEAD.
- 3) PRODUCT SPECIFICATION: PS-42816-001
- 4) PACKAGING INFORMATION SEE MOLEX PACKAGING SPEC. PK-42820-910
- 5) PART MATES WITH MOLEX RECEPTACLE *42816-***2 WITH TPA.
- 6) PART IS DESIGNED IN METRIC.
- 7) AN 'X' IN FRONT OF THE ITEM NUMBER INDICATES THE PART IS NOT TOOLED.
- 8) PARTS ARE NOT TO BE MATED OR UNMATED WHILE CIRCUITS ARE LIVE.
- 9) WHEN USING OVERALL TIN PLATED TERMINALS: FOR APPLICATIONS INVOLVING VIBRATION AND/OR THERMAL CYCLING, MOLEX STRONGLY RECOMMENDS THE USE OF NYE LUBRICANT (NYOGEL 7600) ON THE MATING SURFACES OF THE TERMINAL.
- 10) PARTS CONFORMS TO CLASS 'B' REQUIREMENTS OF COSMETIC SPECIFICATION PS-45499-002
- 11) FOR TAPE AND REEL PACKAGING REFER TO PK-45866-004



<p>ADD NOTE 11</p> <p>EC NO. UCP2009-0752</p> <p>DRAWNGAVERILL 2008/10/10</p> <p>CHKD:AEHAG 2008/10/10</p> <p>APPR:FSMTH 2008/10/10</p> <p>REV DESCRIPTION</p>	<p>QUALITY SYMBOLS</p> <p>▽=0</p> <p>▽=0</p>		<p>GENERAL TOLERANCES (UNLESS SPECIFIED)</p> <table border="1"> <thead> <tr> <th></th> <th>mm</th> <th>INCH</th> </tr> </thead> <tbody> <tr> <td>4 PLACES</td> <td>±.010</td> <td>±.0004</td> </tr> <tr> <td>3 PLACES</td> <td>±.015</td> <td>±.0006</td> </tr> <tr> <td>2 PLACES</td> <td>±.025</td> <td>±.0010</td> </tr> <tr> <td>1 PLACE</td> <td>±.040</td> <td>±.0016</td> </tr> </tbody> </table> <p>ANGULAR ±1/2°</p>			mm	INCH	4 PLACES	±.010	±.0004	3 PLACES	±.015	±.0006	2 PLACES	±.025	±.0010	1 PLACE	±.040	±.0016	<p>DIMENSION STYLE</p> <p>IN/MM</p> <p>SCALE 4:1</p> <p>DESIGN UNITS METRIC</p> <p>THIRD ANGLE PROJECTION</p>	
		mm	INCH																		
	4 PLACES	±.010	±.0004																		
	3 PLACES	±.015	±.0006																		
2 PLACES	±.025	±.0010																			
1 PLACE	±.040	±.0016																			
<p>DRAFT WHERE APPLICABLE MUST REMAIN WITHIN DIMENSIONS</p>		<p>DRAWN BY DATE</p> <p>KSM 1/11/96</p> <p>CHECKED BY DATE</p> <p>SF 1/11/96</p> <p>APPROVED BY DATE</p> <p>SF 1/11/96</p>		<p>TITLE</p> <p>RIGHT ANGLE HEADER ASSEMBLY MINIFIT SR. SERIES</p>																	
<p>MATERIAL NO. SDA-42820-0002</p>		<p>MOLEX INCORPORATED</p>		<p>SHEET NO. 1 OF 1</p>																	
<p>THIS DRAWING CONTAINS INFORMATION THAT IS PROPRIETARY TO MOLEX INCORPORATED AND SHOULD NOT BE USED WITHOUT WRITTEN PERMISSION</p>																					