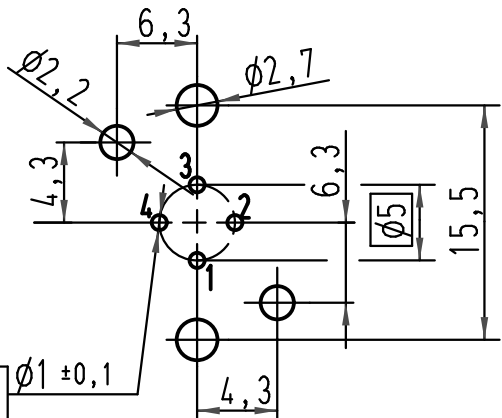
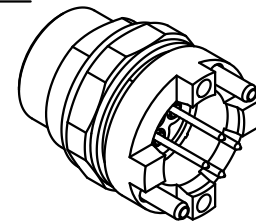


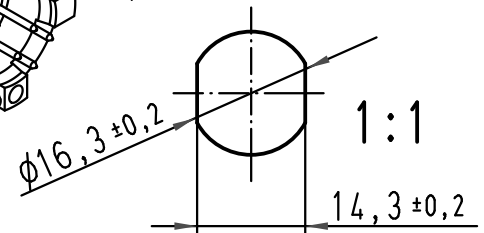
Leiterplatten Lochbild/
PCB layout



1) Leiterplattenauflage/ *top surface PCB*
empfohlene Leiterplattenstärke: 1,6mm/
recommended PCB-thickness: 1,6mm



Montage-
ausschnitt/
panel cut out



4x
 $\phi 0,05$ $\phi 1 \pm 0,1$

| | | | | | | | | |
|---|----------|------|--------------------------------|--|------|---|------------------------------------|--|
| ALL Dimensions in mm Original Size DIN A 4 | | | Techn. Character. | | | Nicht tolerierte Maß/Free size tolerances | | |
| | | | Dat. | | Name | | Maßstab/Scale 2:1 1:1 | Gerätetift M12-A-kodiert gerade IP20 M12 panel feed through/ PCB straight A-coded |
| | | | Detail. 06.07.07 DY | | | | | |
| | | | Insp. | | SP | | | |
| | | | Stand. | | | | | |
| 413598 | 11.02.08 | DY | HARTING Electric GmbH & Co. KG | | | | | TB 21 03 321 6410 |
| 413038 | | | D-32339 Espelkamp | | | | | |
| Mod. | Dat. | Name | | | | Sub. | | Blatt/ page |