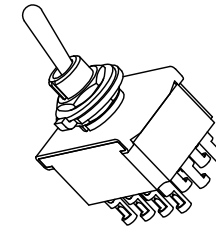
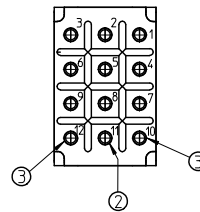
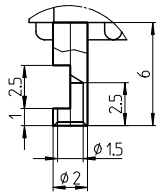


Detail
Scale 5:1

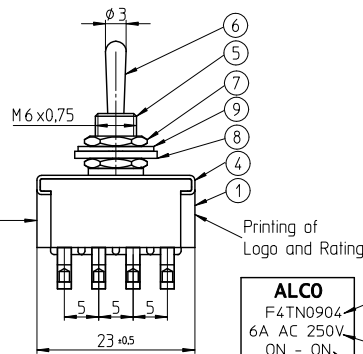


Function Chart			
3 2 1	3 2 1	3 2 1	
6 5 4	6 5 4	6 5 4	
9 8 7	9 8 7	9 8 7	
12 11 10	12 11 10	12 11 10	
3-6437630-5	F4TN0904	ON	NONE
3-6437630-6	F4TPA0904	ON	ON
NONE: no mechanical position			

TE PN	Part	1	2	3
3-6437630-5	F4TN0904	ON	NONE	ON
3-6437630-6	F4TPA0904	ON	ON	ON

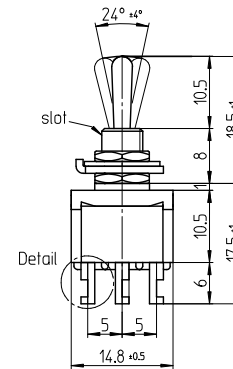
NONE: no mechanical position

Date Code Printing
last digit of year
A-L = January to December
Day



ALCO
F4TN0904
6A AC 250V
ON - ON

Model No.
Rating
SW. Funct.

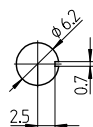


Notes:

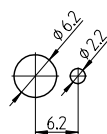
Operating temperature -20°C to +70°C

All materials and finishes comply with RoHS directive

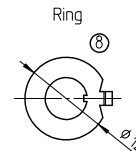
Panel Cutout



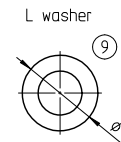
Panel Cutout
using Ring



1,5 thick



1 thick



0.63 thick

Specifications

TE PN	Part	Rating	Initial Contact Resistance	Insulation Resistance	Dielectric Strength	Endurance
3-6437630-5	F4TN0904	AC 125V 6A	MAX 10 milliohms at DC 2 ~ 4V 1A	MIN 1000 M Ohms at DC 500V	AC 1kV/1 min (AC 1.2kV/1 sec)	electrically 20,000 cycles at 20 cycles/min (rated load resistive) mechanically 50,000 cycles at 20 cycles/min
3-6437630-6	F4TPA0904	AC 250V 6A				

Materials Chart

1	Case	Polyester Resin	
2	F Contact	99.98% silver + C3602BD	Ep-Cu/Ni3,AuFb
3	Common	C3602BD	Ep-Cu/Ni3,AuFb
4	Frame	SUS	
5	Bushing	C3602BD	Ep-Cu/Ni3b
6	Actuator	C3602BD	Ep-Cu/Ni3,Cr1b
7	Nut	C3602BD	Ep-Cu/Ni3b
8	Ring	SPCC	Ep-Fe/Cu2,Ni3b
9	L washer	SK-5	Ep-Fe/Cu2,Ni4b

PART NO:	PART NAME:	MATERIAL/SURFACE:	OPTIONAL DESCRIPTION:
PART LIST			
TOLERANCES UNLESS OTHERWISE SPECIFIED ACCORDING TO ISO 8015 and ISO 2768-f			DIMENSIONS: mm
test dimen. / Prüfmaß: □; auxiliary dimen. / Hilfsmaß: (); theor. dimen. / theor. Maß: □			
production control dimen. / Fertigungsmaß: [] ; dimen. for measure. technology / messtechn. rel. Maß: []			
DRAWER		D&E	
CHECKED		03.01.2007 SA008713	
APPROVED			
ECR-NO:	DATE	NAME	INFO
SCALE:	NAME:	DWG NO:	
Toggle Switch quad. pole			©=1968517
Standard Lever			OPTIONAL NO: Customer Drawing
REPLACEMENT FOR:	DWG LOC NO: IF	SHEET: 1 OF 1	REVISION: A A 2

THIS INFORMATION IS CONFIDENTIAL AND PROPRIETARY TO TYCO ELECTRONICS AUSTRALIA GmbH AND ITS WORLDWIDE SUBSIDIARIES AND AFFILIATES. IT MAY NOT BE DISCLOSED TO ANYONE WITHOUT THE WRITTEN AUTHORIZATION FROM TYCO ELECTRONICS AUSTRALIA.