

REVISION CC

DO NOT SCALE THIS DRAWING

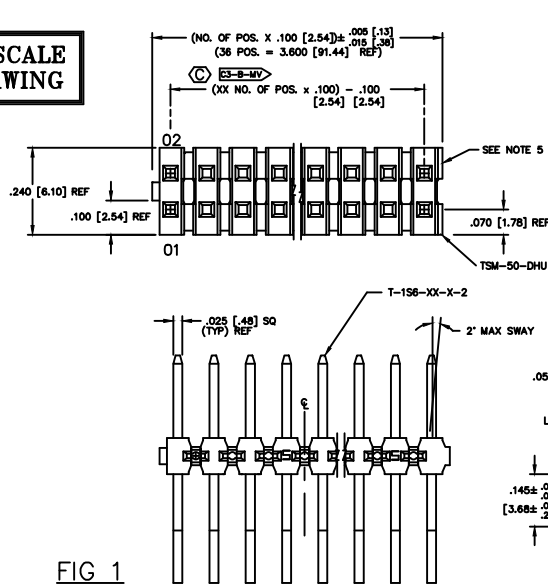


FIG 1

-LC: LOCKING CLIP OPTION
CLIPS N/A WITH -A OPTION.

TABLE 1				
ROW OPTION	LEAD STYLE	BOTTOM ROW PIN #1	TOP ROW PIN #2	'C'
-DH	-01	T-156-09-X-2	T-156-20-X-2	.230 [5.84]
-DH	-02	T-156-09-X-2	T-156-20-X-2	.320 [8.13]
-DH	-03	T-156-09-X-2	T-156-20-X-2	.420 [10.67]
-DH	-04 (SEE NOTE 11)	T-156-09-X-2	T-156-20-X-2	.120 [3.05]
-MT	-01	T-156-08-X-2	T-156-20-X-2	.230 [5.84]
-MT	-02	T-156-15-X-2	T-156-20-X-2	.320 [8.13]
-MT	-03	T-156-09-X-2	T-156-20-X-2	.420 [10.67]

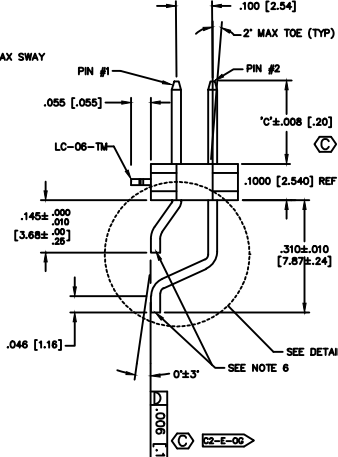
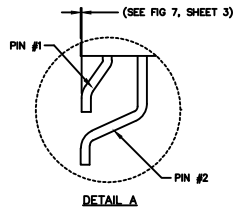


TABLE 2	
No OF POS	S/S BOW
02 - 10	.0030 [.080]
11 - 20	.0050 [.127]
21 - 30	.0070 [.178]
31 - 36	.0080 [.203]

PLATING SPECIFICATION

- T: MATTE TIN CONTACT AND TAIL
- S: 30μ" SELECTIVE GOLD IN CONTACT AREA, MATTE TIN ON TAIL
- L: 10μ" SELECTIVE GOLD IN CONTACT AREA, MATTE TIN ON TAIL
- F: 3μ" FLASH SELECTIVE GOLD IN CONTACT AREA, MATTE TIN ON TAIL
- H: 30μ" HEAVY GOLD IN CONTACT AREA, 3μ" FLASH GOLD ON TAIL
- TL: TIN/LEAD (90/10+/-5) CONTACT AND TAIL
- STL: 30μ" SELECTIVE GOLD, ON CONTACT, TIN/LEAD (90/10+/-5) TAIL
- SM: 30μ" SELECTIVE GOLD, IN CONTACT AREA, MATTE TIN ON TAIL
- LM: 10μ" LIGHT SELECTIVE GOLD, IN CONTACT AREA, MATTE TIN ON TAIL
- FM: 3μ" FLASH SELECTIVE GOLD, IN CONTACT AREA, MATTE TIN ON TAIL
- TM: MATTE TIN CONTACT AND TAIL
- SS: 30μ" STRIPED SELECTIVE GOLD IN CONTACT, MATTE TIN ON TAIL (SEE NOTE 14)

ROW OPTION

- DH: DOUBLE HORIZONTAL (USE TSM-50-DHU)
- MT: MIXED TECHNOLOGY (SEE FIG. 4 & TABLE 1) (NOT AVAILABLE WITH -LC, -SL, -TR OR -A OPTIONS)

- NOTES:**
1. (C) REPRESENTS A CRITICAL DIMENSION.
 2. DELETED
 3. DELETED
 4. DELETED
 5. .005 [.13] MAX CUT FLASH.
 6. .002 [.51] MAX BURR. MUST BE AWAY FROM SMT BOARD SIDE.
 7. DELETED
 8. CUT TO POSITION BODIES TO BE MULTI-CUT OR ROTO-CUT ONLY, NEVER AIR CUT.
 9. TUBE POSITIONS 5-36, BULK PACKAGE POSITIONS 2-4.
 10. 3 LBS. MIN PUSHOUT FORCE.
 11. -04 LEAD STYLE DOES NOT MATE WITH SSM-DH.
 12. ORIENTATION OF PART IN TAPE AND REEL TO BE CONTROLLED BY POCKET DESIGN.
 13. DUE TO THE HIGH AMOUNT OF INSERTION FORCE NEEDED, THE -LC OPTION IS NOT COMPATIBLE WITH AUTO PLACEMENT. SAMTEC RECOMMENDS MANUAL PLACEMENT FOR ALL ASSEMBLIES WITH THE -LC OPTION.
 14. -SS OPTION ONLY AVAILABLE IN LEAD STYLE -01 AND CAN ONLY MATE WITH SSW, SSO, SSM, ESW, ESQ AND BCS.

DIMENSIONAL ARE IN INCHES		TOLERANCES ARE:		TOLERANCES ARE:	
ONE PLACE DECIMALS ± .1 [3]	TWO PLACE DECIMALS ± .005 [.13]	THREE PLACE DECIMALS ± .005 [.13]	FOUR PLACE DECIMALS ± .002 [.051]	ANGLES	± 2°

TSM-1XX-XX-XXX-XX-XX-XXX-XX

NO. OF POSITIONS
-02 THRU -36

LEAD STYLE
(SEE TABLE 1)

OPTION #3

- P: PICK & PLACE PAD, SEE FIG 3 (USE PPP-08) (AVAILABLE ON POS -05 THRU -36) (AVAILABLE ON POS -02 THRU -04 WITH -TR OPTION ONLY) (NOT AVAILABLE WITH -K OPTION)
- TR: TAPE & REEL (29 POS MAX) (AVAILABLE FOR -DH ONLY)
- K: POLYIMIDE FILM (SEE FIG. 5, SHT. 2) (NOT AVAILABLE WITH -P OPTION) (USE K-500-300) (AVAILABLE ON POS -04 THRU -36) (AVAILABLE ON POS -02 THRU -03 WITH -TR OPTION ONLY)

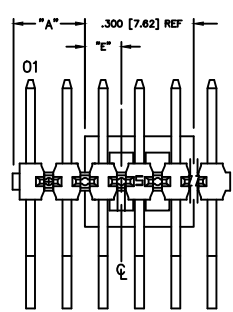
OPTION #2
POLARIZED POSITION: SPECIFY OMITTED PIN

OPTION #1

- LC: LOCKING CLIP (USE LC-06-TM - SEE FIG. 1) (SEE NOTE 13) (03-36 POS USE 2 PER STRIP, 02 POS USE 1 PER STRIP) (USE TSM-XX-DHU) (NOT AVAILABLE WITH -A OR -SL OPTIONS)
- A: ALIGNMENT PIN (SEE FIG. 2, SHT. 2) (STAKED: 4 POS MIN) (MOLDED: 2 POS MIN) (NOT AVAILABLE WITH -LC OR -SL OPTIONS) (LEAVE BLANK FOR NO HOLD DOWN OPTION.)
- SL: SOLDER LOCK (SEE FIG. 6, SHT. 2) (2 POSITION MINIMUM) (NOT AVAILABLE WITH -LC OR -A OPTIONS)

CRITICAL DIMENSION INSPECTION TABLE	
ASSEMBLY OPERATION	IN-PROCESS INSPECTOR
FILL T-156-XX-X-2	C1
FORM T-156-XX-X-2	C2, C4, C5
CUT TO POSITION	C3
CPC'S INTENTIONALLY DELETED:	C6, C7

DIFFERENT AS SHOWN. OTHERWISE SAME AS FIG. 1.



FOR EVEN: "A" = $\frac{(\text{NO. OF POS.} \times .100 [2.54]) - .300 [7.62]}{2} + .050 [1.27]$

FOR ODD: "A" = $\frac{(\text{NO. OF POS.} \times .100 [2.54]) - .300 [7.62]}{2}$

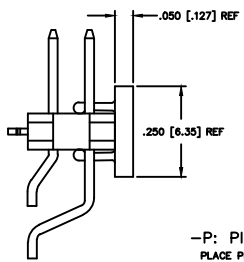


TABLE 3	
POS.	"E"
ODD	.150 [3.81]
EVEN	.100 [2.54]

FIG 3

-P: PICK & PLACE PAD
PLACE PPP-08 ON C AS SHOWN

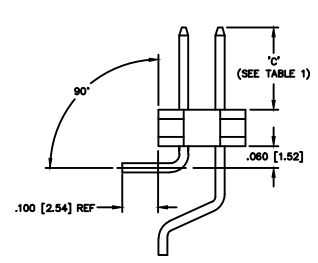
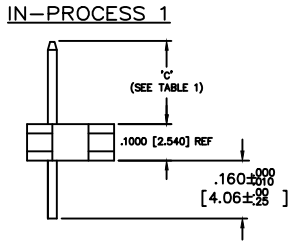
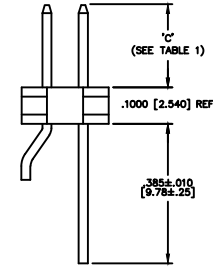


FIG 4

-MT: MIXED TECHNOLOGY
DIFFERENT AS SHOWN,
OTHERWISE SAME AS FIG 1



IN-PROCESS 2



MATERIAL:
INSULATOR:
LCP, UL 94 VO
COLOR: BLACK
TERMINALS:
PHOSPHOR BRONZE

samtec
EXISPROD\ASSEMBLY\100 TSMH
520 PARK EAST BLVD, NEW ALBANY, INDIANA 47150
PHONE (812) 944-6733 P.O. BOX 1147
CODE 85322