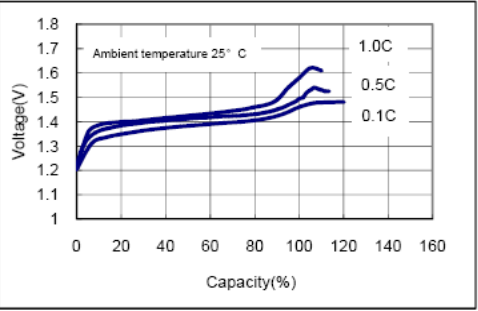


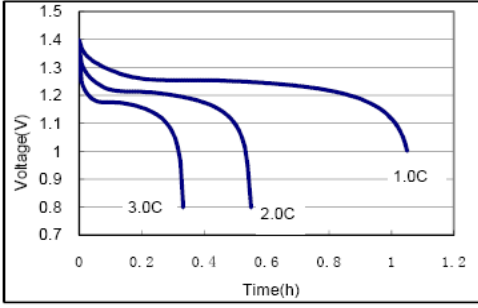
		Conditions	
cell type:	NiMH		
cell size:	C		
nominal voltage:	1.2 V		
max. charge voltage:	1.5 V	at standard charge (0.1C / 20°C)	
capacity			
nominal:	4500 mAh	discharge at 0.2C	
minimum:	4300 mAh	discharge at 0.2C	
	3870 mAh	discharge at 1C	
		1.0V end discharge voltage	
		ta: 20°C	
max. continuous discharge current:	13.5 A	ta: 0...45°C	
charge		current	time
standard charge:	450 mA	1250 mA	16hrs
quick charge:	1250 mA	2000 mA	4hrs
fast charge:	2000 mA		2.5hrs
recommended charge termination control parameters:	0...5 mV 0.8...1 °C 45...50 °C	- delta V temperature rise per minute TCO (temperature cut off)	
trickle charge current:	40...200 mA	(recommended)	
continuous overcharge: (less than 1 year)	≤ 400 mA	no conspicuous deformation no leakage	
internal resistance: (impedance)	≤ 6 mΩ	at 1KHz battery fully charged	
life expectancy:	≥ 500 cycles	acc. IEC standard	
self discharge			
charge retention: (at ≤ 20°C ambient)	≥ 85 % ≥ 80 %	after 6 months storage after 12 months storage	
initial capacity:	≥ 3000 mAh	within 30 days after delivery discharge at 0.2C	
ambient temperature range:	0...45 °C 10...40 °C - 20...55 °C - 20...50 °C - 20...40 °C - 20...30 °C	standard charge fast charge discharge storage (≤3months) storage (≤6months) storage (≤24months)	

Diagrams

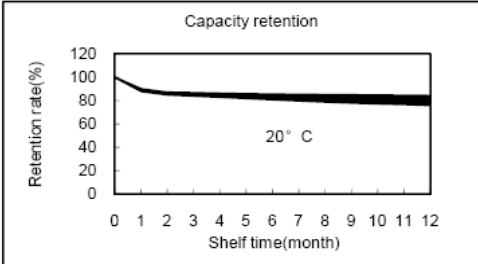
Charge characteristics



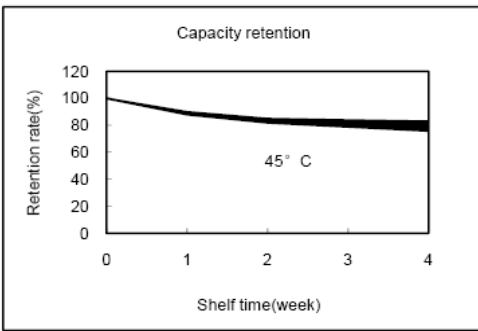
Discharge characteristics



Capacity retention characteristics



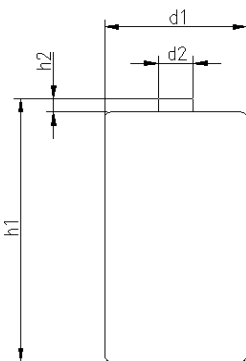
Capacity retention characteristics



QCT1: 20/4100/10
QCT2: 30/3800/15

mechanical specifications

cell dimensions			
diameter d1:	approx.	25.8	- 0.8 mm
diameter d2:		11.0	mm
height h1:		50.0	- 2.0 mm
height h2:		0.0	- 0.3 mm
weight:		80	± 5 g



	ANSMANN Specifications for model:	C4500mAh FLAT TOP
		low self discharge bulk package
	data sheet no. / part no.	2310-3001
	supplier no.	701344
author / date	TG / 10.02.2014	

Manufacturer reserves the right to alter or amend the design, model and specification without prior notice