

**PLEASE CHECK WWW.MOLEX.COM FOR LATEST PART INFORMATION**

**Part Number:** [180580-0005](#)  
**Status:** **Active**  
**Overview:** LED Array Holders, Dual-Ended Wire Trap  
**Description:** LED Array Holder for 16.00 by 19.00mm COB, Circular Version, Gold (Au) Plating, One-Piece Design with Three-finger attachment for LEDiL Angela/Angelina Reflectors

**Documents:**

[Drawing \(PDF\)](#) [Test Summary TS-180155-001 \(PDF\)](#)  
[Product Specification PS-180580-004 \(PDF\)](#) [RoHS Certificate of Compliance \(PDF\)](#)

**General**

Product Family	Solid State Lighting
Series	<a href="#">180580</a>
Beam Angle	N/A
Height	4.10mm
Overview	<a href="#">LED Array Holders, Dual-Ended Wire Trap</a>
Product Name	LED Array Holder
Type	Socket Assembly
UPC	887191461090

**Physical**

Base Type	Direct Wire
Color Rendering Index (CRI)	N/A
Correlated Color Temp (CCT)	N/A
Lamp Type	Socket
Mounting Style	Screws
Net Weight	8.954/g
Packaging Type	Tray

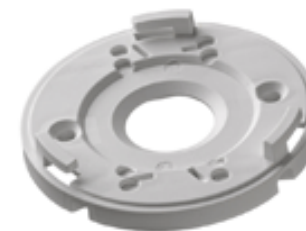
**Electrical**

Lamp Wattage - Maximum	N/A
Lumens	N/A
Voltage (Fixture) - Maximum	600V DC

**Material Info**

**Reference - Drawing Numbers**

Product Specification	PS-180580-004
Sales Drawing	SD-180580-004
Test Summary	TS-180155-001



*image - Reference only*

*Series*

**EU RoHS**

**ELV and RoHS  
Compliant**

**REACH SVHC**

**Contains SVHC: No  
Low-Halogen Status  
Not Low-Halogen**

**China RoHS**



**Need more information on product  
environmental compliance?**

Email [productcompliance@molex.com](mailto:productcompliance@molex.com)  
 For a multiple part number RoHS Certificate of Compliance, [click here](#)

Please visit the [Contact Us](#) section for any non-product compliance questions.

**Search Parts in this Series**

[180580Series](#)