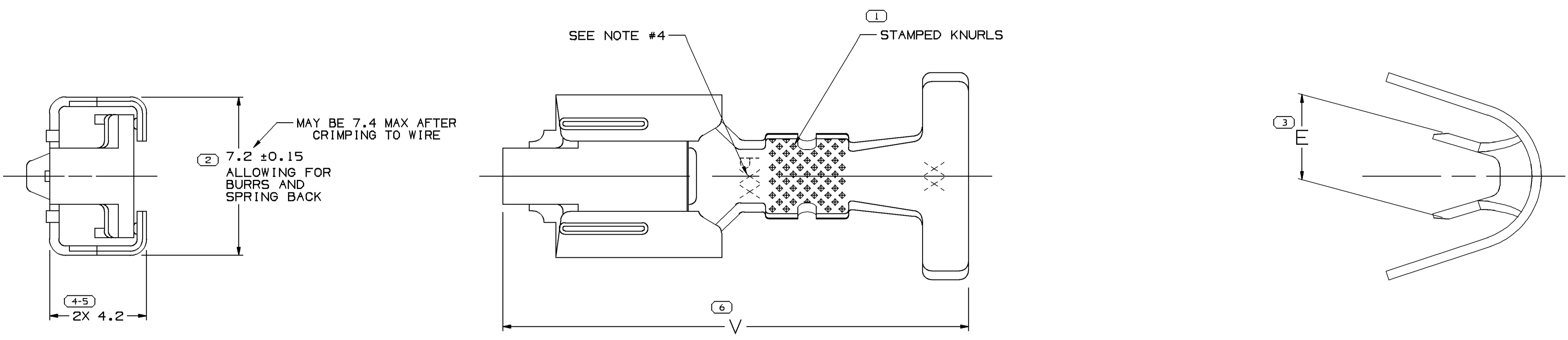
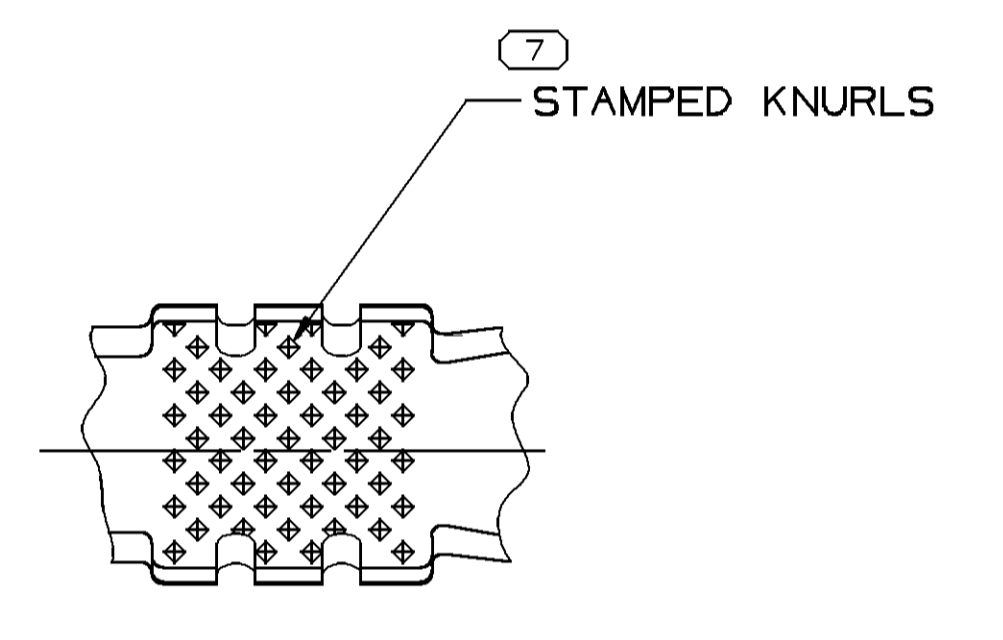
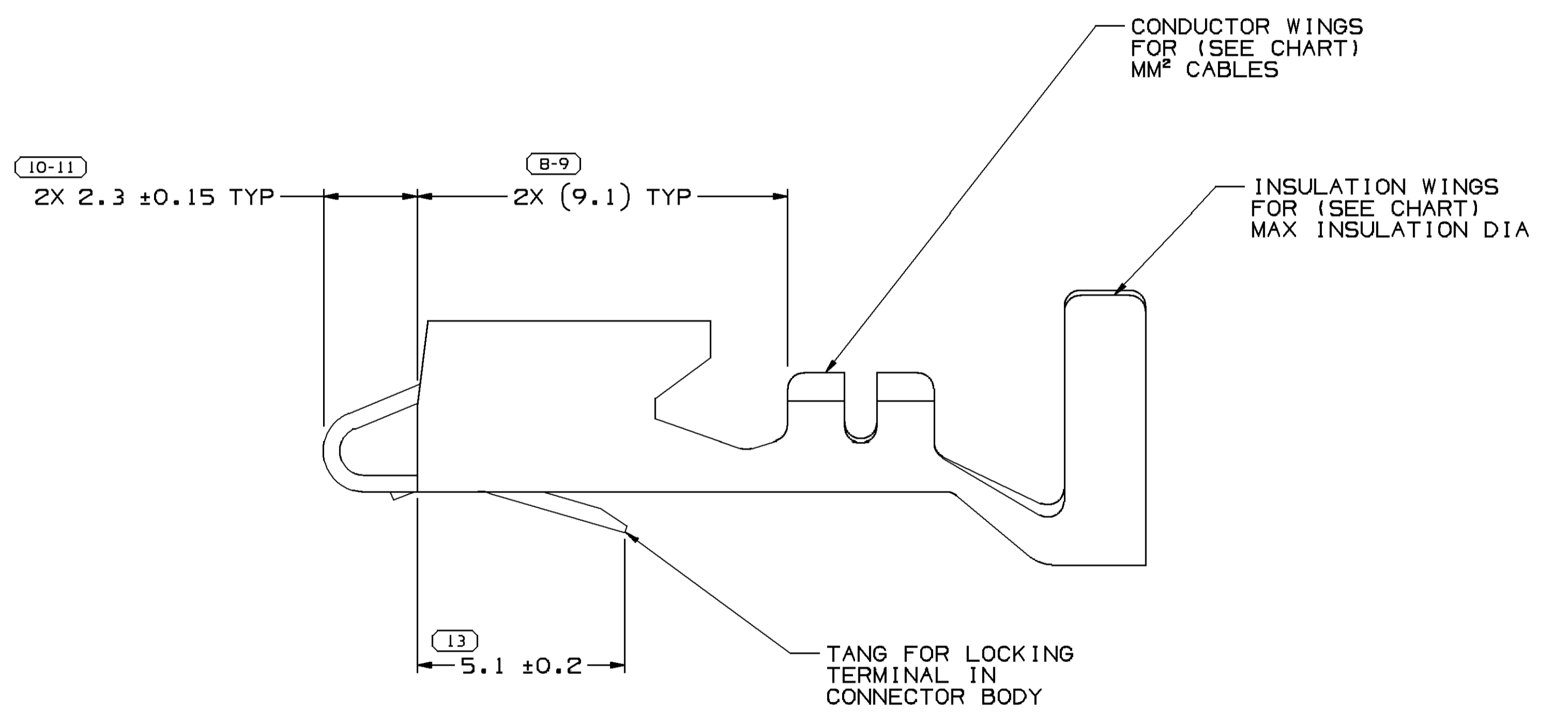


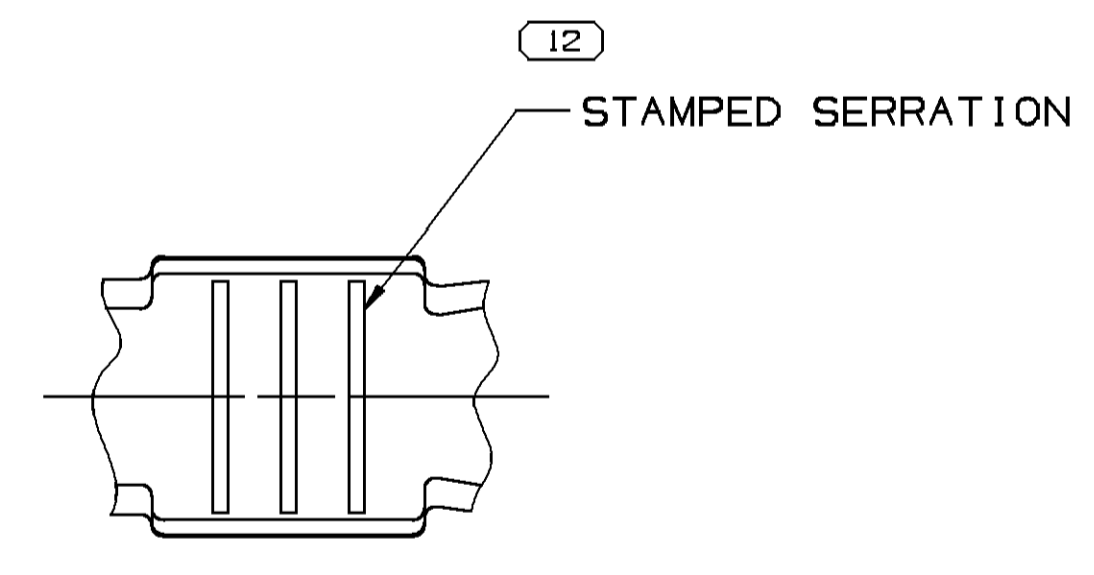
SYMBOL DEFINITION		MISSING NUMBERS		DATE		REV		ZONE		REVISION HISTORY		AUTH		DR		APVD		
A DIMENSION WITHOUT AN INSPECTION REPORT SYMBOL () DOES NOT REQUIRE INSPECTION. IT MAY BE CONTROLLED ON AN INDIVIDUAL COMPONENT DRAWING.		TOTAL NO. OF SYMBOLS ON DRAWING	13	14-16.		27AU99	R	001	-	-	ALL ACTIVE PARTS - REDRAWN TO PD & ADDED CARRIER STRIP & SEAL ASSEMBLY INFORMATION		990009	RGT	CMP	JH		
		LAST NO. USED	19			27AU99	R	002	-	-	ALL ACTIVE PARTS - LETTER DIM V WAS 20.2		198182	RGT	CMP	JH		
						09JA03	R	03	-	-	SHEET 1 OF 3 WAS SHEET 1 OF 2		230755	ECB	JAA	AGL		
						29ND04	R	04	-	-	15305232 - REVISED MATERIAL CODE		261521	END	END	B6		
						21FE05	R	05	-	-	ALL ACTIVE PARTS - UPDATED MAT'L SPECS; REVISED MATING BLADE TOLERANCE (NOTE#2): 7.05+0.3-0.2 WAS 7.05+0.25-0.3 & ADDED NOTE #5		264738	END	END	B6		
						06JN05	R	06	-	-	REVISED GRAPHICS		268139	MM	MM	MM	B6	
						270C06	R	07	-	-	UPDATED PDM ATTRIBUTES		286199	MM	MM	MM	B6	
						19JUL11	R	08	-	-	ALL ACTIVE PARTS - DIM "V" TOL WAS ±0.3		414803	HRS	HRS	HRS	GEM	
						15AU12	R	09	-	-	UPDATED PDM ATTRIBUTES		418815	JFF	JFF	JFF		



TYPE 101

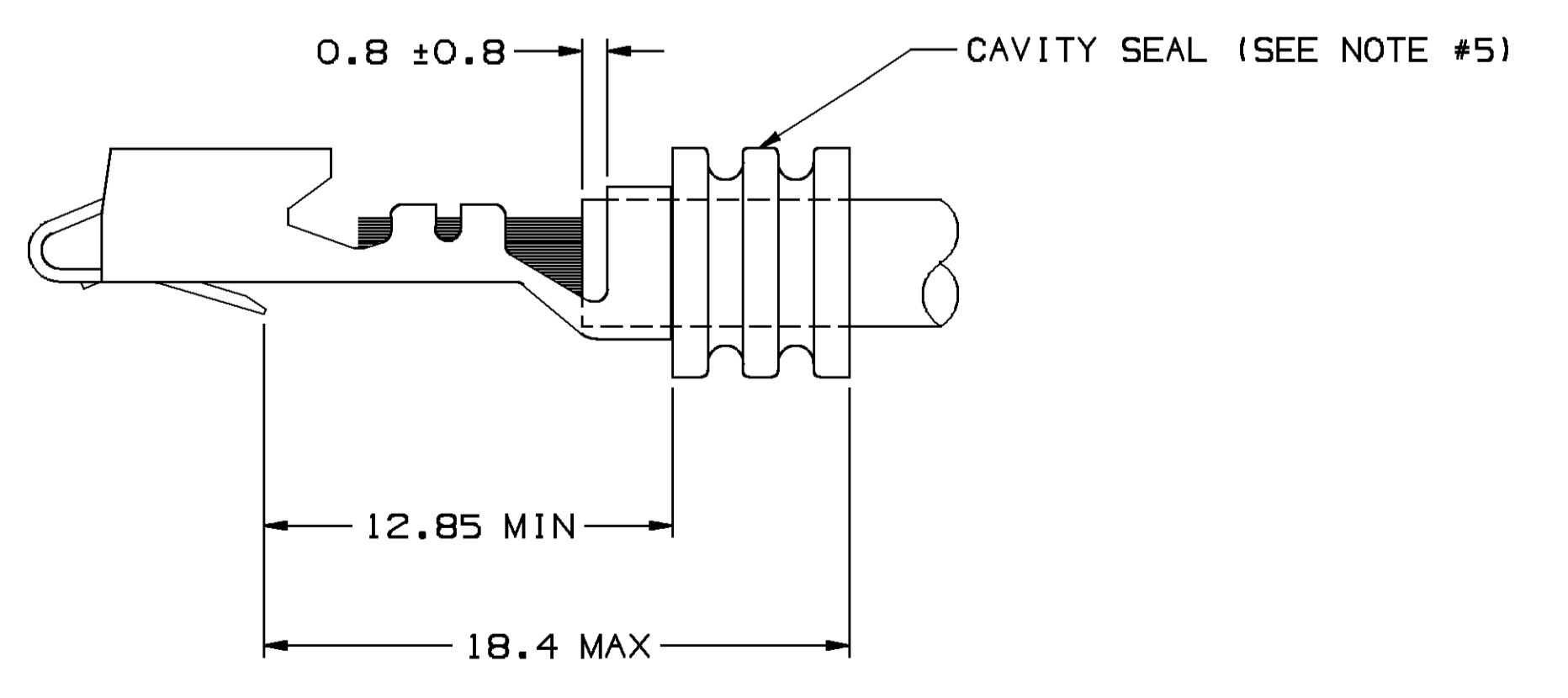


TYPE 102
SAME AS TYPE 101
EXCEPT AS SHOWN

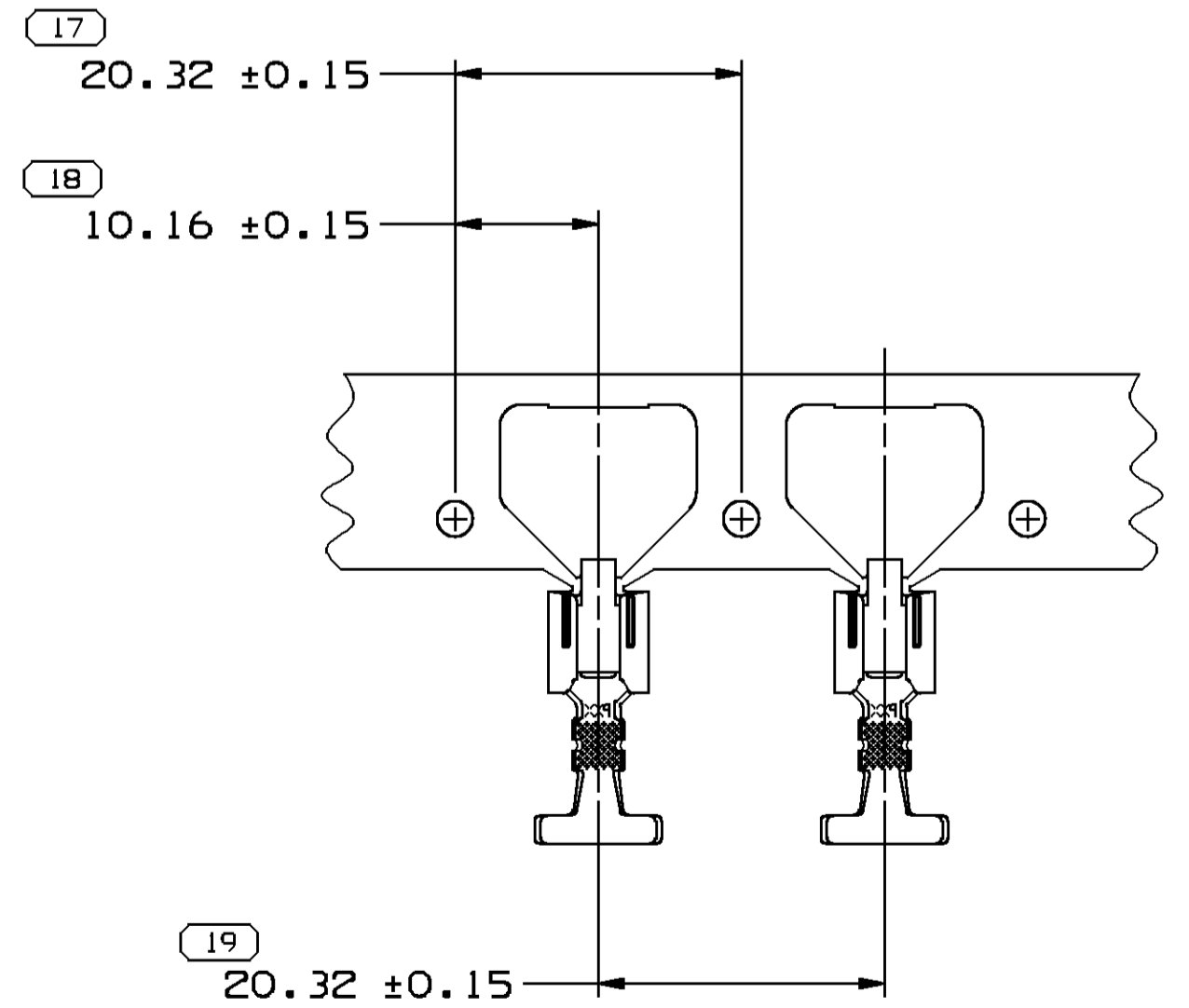


TYPE 103
SAME AS TYPE 101
EXCEPT AS SHOWN

TYPE 104
SAME AS TYPE 103
EXCEPT AS SHOWN



SCALE 5:1



CARRIER STRIP VIEW
SCALE 2:1

NOTES

- UNLESS OTHERWISE SPECIFIED AND/OR INDICATED: DIMENSIONS ARE TO FACE OF VIEW SHOWN AND AUTOMATICALLY ROUNDED BY COMPUTER FOR INSPECTION (SEE MATH MODEL FOR PRECISE DIMENSIONS). FOR ALL OTHER DIMENSIONS NOT SHOWN BUT REQUIRED FOR TOOL BUILD, SEE MATH MODEL FOR PRECISE TOOL PATH DATA.
- RECOMMENDED MATING BLADE 0.8 +0.04/-0.03 THK X 6.3 ±0.1 WIDE.
- THIS PART ACCEPTS THE FOLLOWING COMPONENTS OR EQUIVALENT: TERMINAL 12020127
- "PXX" INDICATES "P" PLUS LAST TWO DIGITS OF MAKE DIE SERIES NUMBER (PO1, PO2, PO3, ETC).
- TERMINAL TO CRIMP AND RETAIN CAVITY SEAL 120523B6 OR EQUIVALENT.
- DO NOT PROBE, TEST OR OTHERWISE CONTACT THE INTERIOR REGION (THE SPRING OR ANY MOVING PART) OF THIS TERMINAL. SEVERE DAMAGE CAN OCCUR, COMPROMISING THE PERFORMANCE OF THE ELECTRICAL INTERFACE.

PART NO	REV	IN/P	MAT'L SIZE	MAT'L SPEC	PART NO	REV	IN/P	MAT'L SIZE	MAT'L SPEC	SIZE (MM ²)	ID	DIA	TYPE
15317332	03	AC	0.406 X 33.32	AG PLATED COPPER NICKEL ALLOY	6-4	10	5.24	104	5.7	19.48			
15317331	03	AC	0.406 X 33.32	COPPER ALLOY	6-4	10	5.24	103	5.7	19.48			
15305232	02	AC	0.406 X 33.32	AG PLATED COPPER NICKEL ALLOY	5-3	11	5.24	101	4.6	19.48			
12066562	F	-	0.406 X 33.32	COPPER ALLOY	3	12	4.9	101	4.6	19.79			
12066561	F	-	0.406 X 33.32	COPPER ALLOY	08	AC	0.406 X 33.32	102	3.2	19.79	0.8-0.5		
12066560	G	-	0.406 X 33.32	COPPER ALLOY	09	AC	0.406 X 33.32	101	4.6	19.48			
12066559	E	-	0.406 X 33.32	COPPER ALLOY	07	AC	0.406 X 33.32	101	3.7	19.79			
UNPLATED													

13 PROCESS SENSITIVE DIMENSION	
DIMENSIONS ENCLOSED IN () INDICATE REFERENCE DIMENSIONS AND NO TOLERANCE LIMITS ARE ESTABLISHED	CHART ID
FROM 1 + 0	> 12
TO 0	
TOLERANCE UNLESS OTHERWISE SPECIFIED	
±0.1	±0.2
ANGULAR TOLERANCE ±2°	

THIRD ANGLE PROJECTION	DO NOT SCALE	USE MATH DATA
------------------------	--------------	---------------

DELPHI
DELPHI PACKARD ELECTRICAL/ELECTRONIC ARCHITECTURE

WARREN, OH
COPYRIGHT 1988 DELPHI CORPORATION AND/OR ITS AFFILIATES. ALL RIGHTS RESERVED.
THIS DRAWING IS THE PROPERTY OF DELPHI CORPORATION. THE REPRODUCTION, DISTRIBUTION AND UTILIZATION OF THIS DOCUMENT OR ITS RELATED CAD DATA AS WELL AS COMMISSION OF ANY CONTENT TO OTHERS, WITHOUT EXPRESS AUTHORIZATION IS PROHIBITED.

DATE: 22JUL88

OR: ANDY T. LE

APV02: J. COLDSNOW

APV03: R. D. KEARNS

APV04:

APV05:

SUBSTANCES OF CONCERN AND RECYCLED CONTENT PER DELPHI (044900)

MATERIAL: SEE CHART

DRAWING NAME: TAXI TERM F M/P 630 SEALED TANG

DRAWING NUMBER: 12088013

SIZE: A0

SCALE: 10:1

FRAME NO: 1

SHEET NO: 1

OF 3

REV: R

IN/P: 09