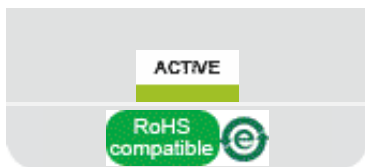
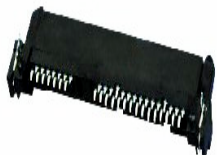


10029364-001LF - SATA : 22
Position Right Angle Surface
Mount Receptacle



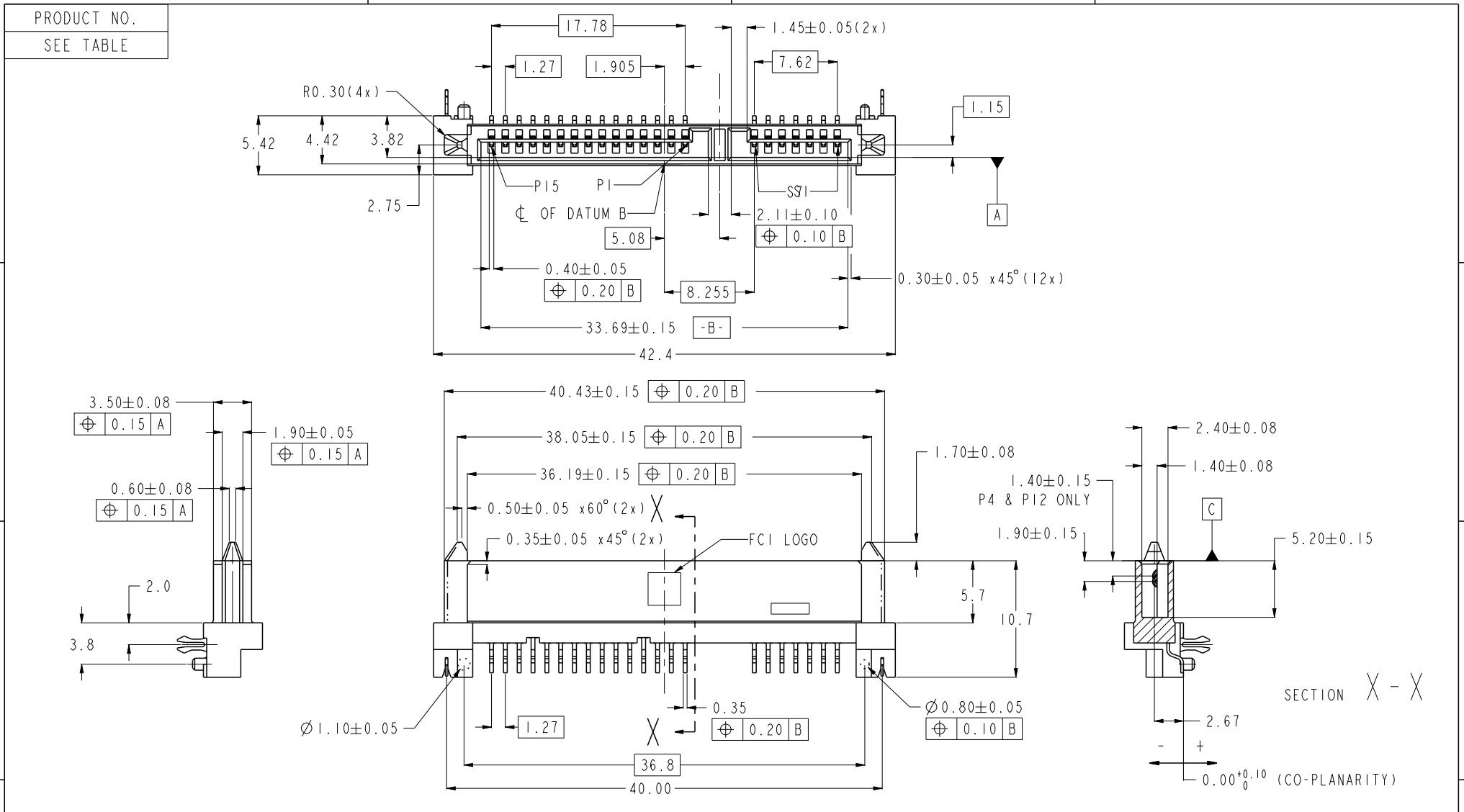
www.fci.com

Specifications

| General | |
|---------------------------------|---------------------------|
| Number of contacts | 22 |
| Orientation | Right Angle |
| Retention Feature | Fork Lock/Harpoon |
| Electrical | |
| Current rating | 1.5A at 30°C |
| Resistance (Contact) | 15 M-ohms max. |
| Resistance (Insulation) | 1000 M-ohms min. |
| Voltage rating | 500V AC |
| Mechanical | |
| Durability (Mating cycles) | 500 Mating Cycles |
| Mounting | |
| Termination | Surface Mount |
| Physical | |
| Color (Housing) | Black |
| Material (Contact) | Copper Alloy |
| Material (Housing) | Thermoplastic (UL 94 V-O) |
| Plating (Contact) | 30u" Gold |
| Temperature (Operating - range) | 260°C max. for 10 Seconds |
| Approvals / Certifications | |
| Approvals / Certifications | UL and CSA Pending |
| Other Features | |
| Packaging (Type) | Tray |
| Type | Combo Receptacle |



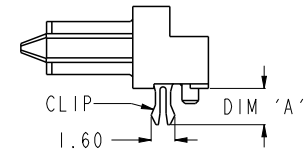
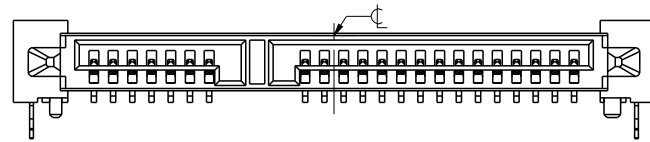
Copyright FCI.



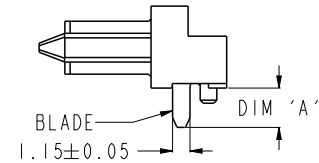
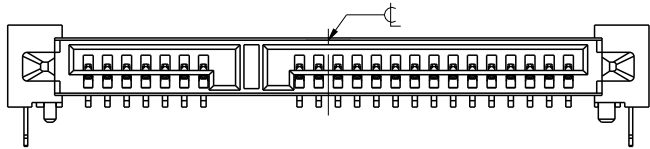
| | | | | | | | | | | | |
|---------------------------------------------|--|-------------------------------------------------|--|---------------------------|--|---------------------------------------------------------|--|------------------------|--|-----------------------------|--|
| spec ref | | dr w cadmin | | 2006/02/20 | | projection | | size A4 | | scale 1:1 | |
| tolerance std | | eng Roger Ng | | 2012/11/29 | | | | | | ecn no ELX-S-13530-1 | |
| ASME Y14.5 | | chr - | | - | | | | | | rel level Released | |
| surface <input checked="" type="checkbox"/> | | TOLERANCES UNLESS OTHERWISE SPECIFIED linear | | appr Chen-Hong Tan | | 2012/12/05 | | product family - | | rev | |
| | | | | | | title S-ATA COMB RECEPTACLE R/A SMT TYPE ASSY | | dwg no 10029364 | | R | |
| | | | | angular 0° ±° | | www.fci.com | | cat. no. - | | Product - Customer Drw | |

Prod File - REV C - 2009-06-09

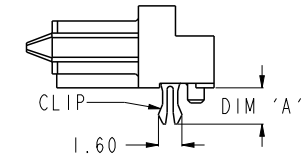
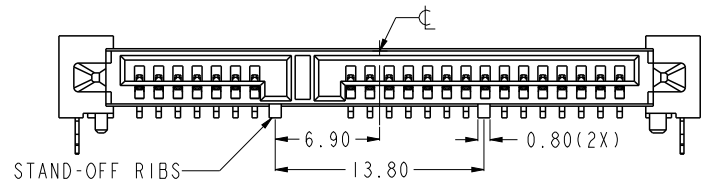
10029364-00XLF/TRLF



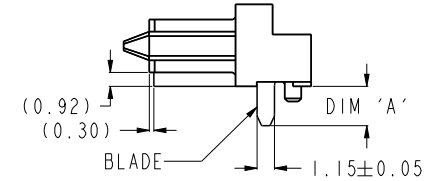
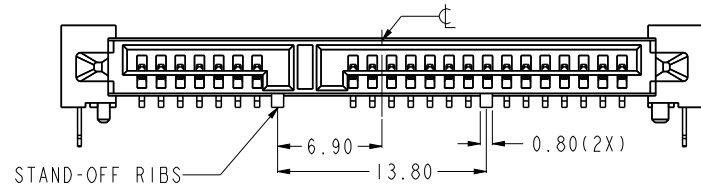
10029364-01XLF/TRLF



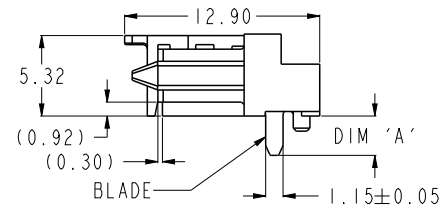
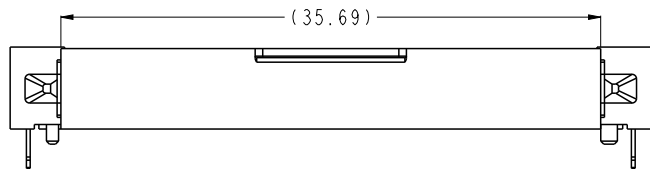
10029364-10XLF/TRLF



10029364-11XLF/TRLF



10029364-11XCLEF/C-TRLF



| | | | | | | | | | | | |
|---------------|------------|---------------------------------------|-----------|------------|-----------------------|------------------------|---------------|-------------------|--------|---------------|----------|
| spec ref | | dr | w wcadmin | 2006/02/20 | projection | MM ←→ | size | A4 | scale | 1:1 | |
| tolerance std | ASME Y14.5 | TOLERANCES UNLESS OTHERWISE SPECIFIED | | eng | | | Roger Ng | 2012/11/29 | ecn no | ELX-S-13530-1 | |
| | | chr | - | appr | | | Chen-Hong Tan | 2012/12/05 | | rel level | Released |
| surface | linear | 0.X | ±---- | | S-ATA COMB RECEPTACLE | dwg no | 10029364 | | rev | R | |
| | | 0.XX | ±0.20 | | | | | | | | |
| | | 0.XXX | ±---- | | | | www.fci.com | R/A SMT TYPE ASSY | | | |
| | angular | 0° | ±° | cat. no. | - | Product - Customer Drw | sheet 2 of 3 | | | | |

| PRODUCT NO. | RECOMMENDED P.C.B. THICKNESS | HOLD DOWN | DIM 'A' | HOUSING WITH STAND-OFF RIBS | PACKAGING |
|--------------------|------------------------------|------------|---------|-----------------------------|-------------|
| 10029364-001LF | 1.60 | METAL CLIP | 2.40 | NO | TRAY |
| 10029364-001TRLF | | | | | TAPE & REEL |
| 10029364-002LF | 1.00 | | NO | TRAY | |
| 10029364-002TRLF | | | | TAPE & REEL | |
| 10029364-102LF | | | YES | TRAY | |
| 10029364-102TRLF | | | | TAPE & REEL | |
| 10029364-011LF | -- | BLADE | 2.60 | NO | TRAY |
| 10029364-011TRLF | | | | | TAPE & REEL |
| 10029364-111LF | | | YES | TRAY | |
| 10029364-111TRLF | | | | | TAPE & REEL |
| 10029364-111CLF | | | | TRAY | |
| 10029364-111C-TRLF | | | | TAPE & REEL | |

NOTES:-

1. MATERIAL:

1) HOUSING : HIGH TEMP. THERMOPLASTIC, UL 94V-0
COLOR : BLACK

2) TERMINAL : COPPER ALLOY
3) HOLD DOWN : COPPER ALLOY

2. FINISH:

1) TERMINAL : 30u" GOLD PLATING (CONTACT POINT)
OVER 50u" MIN NICKEL

2) SOLDER TAIL : 100u" MIN TIN OVER 50u" NICKEL
3) HOLD DOWN : 100u" MIN TIN OVER 50u" NICKEL

3. TRUE POSITION APPLY AT TERMINAL TIP

4. THE STANDARD PACKAGING IS IN TRAY.

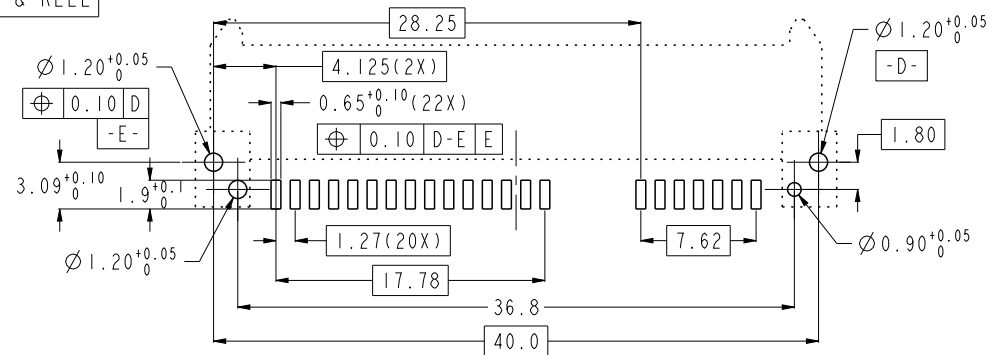
5. THE HOUSING WILL WITHSTAND EXPOSURE TO 260°C PEAK TEMPERATURE FOR 10 SECONDS IN A CONVECTION, INFRA-RED OR VAPOR PHASE REFLOW OVEN

6 THIS PRODUCT MEETS EUROPEAN UNION DIRECTIVES AND OTHER COUNTRY REGULATIONS AS DESCRIBED IN GS-22-008

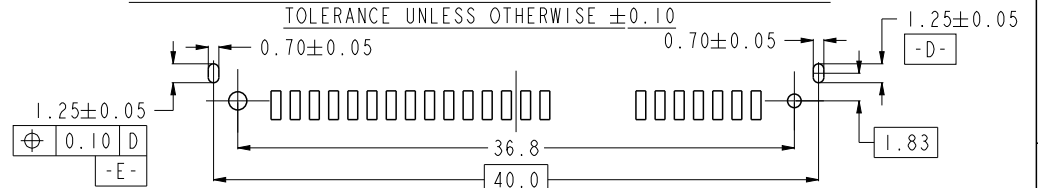
7 PART NUMBERS ENDING IN "LF" ARE MEANT FOR LEAD-FREE IDENTIFICATION. P/N XXXXXXXXX-XXXLF IS EQUIVALENT TO PREVIOUS P/N XXXXXXXXX-XXX

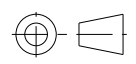
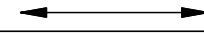

8. A  SYMBOL WILL BE NEXT TO ANY DIMENSION, VIEW, OR NOTE WHICH HAS BEEN MODIFIED WITH THE CURRENT DRAWING REVISION.

RECOMMENDED P.C.B. LAYOUT
TOLERANCE UNLESS OTHERWISE ± 0.10



ALTERNATIVE P.C.B. LAYOUT
REFER TO RECOMMENDED PCB LAYOUT FOR UNSPECIFIED DIMENSIONS
TOLERANCE UNLESS OTHERWISE ± 0.10



| | | | | | | | | | | |
|---------------------------------------------------------------------------------------------|---------|-------|-----------|------------|-----------------------------------------------------------------------------------------------------|---------------------------------------------------------------------------------------------|------------------------|---------------|-------|-----|
| spec ref | | dr | w wcadmin | 2006/02/20 | projection  | MM  | size | A4 | scale | 1:1 |
| tolerance std | | eng | Roger Ng | 2012/11/29 | | | ecn no | ELX-S-13530-1 | | |
| ASME Y14.5 | | chr | - | - | | | rel level | Released | | |
| surface  | linear | 0.X | ±---- | | product family | - | dwg no | 10029364 | rev | R |
| | | 0.XX | ±0.20 | | | | | | | |
| | | 0.XXX | ±---- | | | | | | | |
| | angular | 0° | ±° | | product family | - | Product - Customer Drw | sheet 3 of 3 | | |