



LS 50-L FLEX

Battery-powered
hydraulic punch driver
with 360° rotating head

LS 50-L FLEX

Battery powered hydraulic punching tool

Flexible and light.



Flexible aluminum head

360° rotating head



Punch capacity:
Punches up to 104.8 x 104.8 mm St37 3.5 mm
Punches 92 x 92 mm or 46 x 92 mm, 68 x 68 mm or
ISO 63 (64 mm dia.) round in St37 3.5 mm
Suitable for 144,1 mm round - St37 3.5 mm
Suitable for Slug Splitter up to 64 mm round - 3.5 mm
stainless steel

Weight incl. battery 2.12 kg

Punching force 60kN

Non-slip rubber grip

Automatic limit stop

Lithium-Ion technology

LED illuminates working area

Slim and compact design

Part no.
LS50LFLEX



LS 50-L FLEX

Always applicable.

Battery powered punch driver for every angle.

The design of the aluminum head of the LS 50-L FLEX allows the head to rotate by 360°.

The combination of the slim and compact design and low weight qualifies the LS 50-L FLEX for working in constricted spaces. The automatic limit stop prevents the tools from damage and increases lifetime.

Highlights

- 360° rotating head for operations in hard to reach areas
- Automatic limit stop
- Lithium-Ion technology reduces charging time and increases operating time
- Low weight of 2.12 kg
- Applicable with all Greenlee punching tools
- Compact design and ergonomic designed housing facilitates fatigue-proof operation
- Just „one“ trigger allows easy handling
- White LED illumination of working area
- High punching force (60kN)

Scope of supply



LGL1	Quick-charger for 18V Li-Ion batteries
RAL2	Battery 18 V / 3.0 Ah Li-Ion (54Wh)
50318721	Draw stud for hydraulic operation 19.0x105 mm
50032488	Spacer, short
52049371	HSS Co5 step bit
51300430	Draw stud for punch with hydraulic operation 9.5x71 mm
50339672	Adapter 19.0 x 48 mm with internal thread 9.5 mm
KK50LFLEX	Plastic case

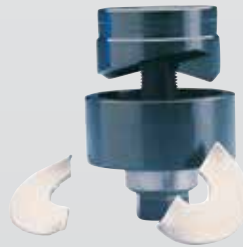


Standard and SlugBuster® – Round punches for ST37



Standard Punch:
 • Ball bearing draw stud for easy manual operation

Suitable for:
 Mild steel (St37), plastic and aluminum up to 3.5 mm thickness



SLUG-BUSTER® punch systems:
 • For quick, clean, effortless and burr-free holes

Suitable for:
 Mild steel (St37), plastic and aluminum up to 3.5 mm thickness

Dimensions in mm	PG	ISO	Max. material thickness	Standard punch system			SLUG BUSTER®			
				Punch	Die	Draw stud	Punch	Die	Draw stud	
									LS50LFLEX LS60 L	50342916 50342991
12,5	Pg 7	ISO 12	1,5	-	-	-	50067281	50067290	-	-
12,7	Pg 7		1,5	50069969	50042351	-	-	-	-	-
14,3			1,5	50042300	50042297	-	-	-	-	-
15,2	Pg 9	ISO 16	2,0	50213164	50320025	-	50319698	50320025	51300430	51300430
15,9			1,5	50042238	50042246	-	-	-	-	-
16,2			2,0	50351931	50351621	51300430	50351630	50351621	51300430	51300430
18,6	Pg 11	ISO 20	2,0	50177001	50320033	51300430	50319701	50320033	51300430	51300430
19,1			2,0	50039989	50039997	51300430	-	-	-	-
20,4			Pg 13	2,0	50176978	50320041	51300430	50319710	50320041	51300430
20,6	Pg 16	ISO 25	2,0	50042262	50042254	51300430	-	-	-	-
22,5			2,0	-	-	-	50317563	51147220	51300430	51300430
22,5			Pg 16	3,5	51040060	51147220	51300430	-	-	-
23,8		ISO 25	2,0	50042386	50042378	51300430	-	-	-	-
25,4			2,0	50039865	50351648	51300430	50351656	50351648	51300430	51300430
27,0			2,0	50042408	50042424	51300430	-	-	-	-
28,3	Pg 21	ISO 32	2,0	50368826	50320068	51300430	50319736	50320068	51300430	51300430
28,3			3,0				50317571	50069721	50318721	52045040
28,3			3,5	51040080	51069720	51300430	-	-	-	-
28,6		ISO 40	2,0	50039903	50039911	51300430	-	-	-	-
30,5			1,5	50362828	50362798	51300430	-	-	-	-
30,5			2,0	-	-	-	50362844	50362798	51300430	51300430
30,5		ISO 50	3,5	-	-	-	50602373	50362780	50318721	52045040
31,8			1,5	50040022	50040030	51300430	-	-	-	-
32,5			3,5	50244590	50351680	50318721	50351699	50351680	50318721	52045040
33,4		ISO 63	1,5	50065874	50065866	50318721	-	-	-	-
34,6			3,5	50040103	50040111	50318721	50317580	50040111	50318721	52045040
34,9			3,5	50047345	50047353	50318721	-	-	-	-
37,0	Pg 29	ISO 80	3,5	50183311	50320084	50318721	50319752	50320084	50318721	52045040
38,1			3,5	50047361	50070444	50318721	-	-	-	-
40,5			3,5	50244620	50351591	50318721	50351583	50351591	50318721	52045040
41,3		ISO 100	3,5	50042513	50042505	50318721	-	-	-	-
43,2			3,5	51069740	50040138	50318721	50317598	50040138	50318721	52045040
44,5			3,5	50042572	50042564	50318721	-	-	-	-
47,0	Pg 36	ISO 125	3,5	50176870	50320092	50318721	50319760	50320092	50318721	52045040
47,6			3,5	50042483	50042491	50318721	-	-	-	-
49,6			3,5	50069780	50040618	50318721	50317601	50040618	50318721	52045040
50,8	Pg 42	ISO 150	3,5	50042327	50351613	50318721	50351605	50351613	50318721	52045040
54,0			3,5	50042459	50361732	50318721	50361724	50361732	50318721	52045040
57,2			3,5	50040588	50040596	50318721	-	-	-	-
60,0	Pg 48	ISO 200	3,5	50176900	50320114	-	50319787	50320114	50318721	52045040
61,5			3,5	50040626	50040634	-	50317610	50040634	50318721	52045040
63,5			3,5	50042343	50042335	-	-	-	-	-

Standard and SlugBuster® – Round punches for ST37

Dimensions in mm	PG	ISO	Max. material thickness	Standard punch system			SLUG BUSTER®			
				Punch	Die	Draw stud LS 50LFLEX LS 60 L	Punch	Die	Draw stud	
									50342916 50342991	LS50LFLEX
64,0		ISO 63	3,5	-	-	-	50351672	50351664	50318721	52045040
66,7			3,5	50042521	50069977	52045040	-	-	-	-
69,9			3,5	50042475	50042467	52045040	-	-	-	-
70,6			3,5	50024450	50024434	52045040	-	-	-	-
74,0			3,5	50041754	50041770	52045040	-	-	-	-
76,2			3,5	50042599	50042580	52045040	-	-	-	-
79,4			3,5	50063634	50063626	52045040	-	-	-	-
82,0			3,5	50189050	50189069	52045040	-	-	-	-
89,8			3,5	50041800	50041835	52045040	-	-	-	-
95,3			3,5	50052659	50052667	52045040	-	-	-	-
102,7			3,5	50046535	50046527	-	-	-	-	-
115,4			3,5	50046551	50046543	-	-	-	-	-
120,0			3,5	50214896	50214918	-	-	-	-	-
144,1			3,5	50054473	50054481	-	-	-	-	-

SLUG SPLITTER® – Round punches for stainless steel



- Heavy-duty dies and stainless steel draw studs for longer life
- Unique punch profile also splits slugs for easier slug removal

Suitable for:
Stainless steel (V2A), mild steel (St37), plastic and aluminum up to 3.5 mm thickness

Order info:
* Slug Splitter SC® - self-centring

Dimensions in mm	PG	ISO	Max. material thickness	SLUG SPLITTER®		
				Punch	Die	Draw stud
						LS50LFLEX, LS60L, 50159062, 50250973, 50342916, 50342991
15,2	Pg 9		2,5	50311174	50294512	50294512
16,2		ISO 16	2,5	50045997	50294512	50294512
18,6	Pg 11		2,5	50311190	50294512	50294512
20,4	Pg 13	ISO 20	2,5	50311204	50294512	50294512
22,5	Pg 16		3,5	50281542*	50294512	50294512
25,4		ISO 25	3,5	50046020	50294512	50294512
28,3	Pg 21		3,5	50281569*	50294520	50294520
30,5			3,5	50364901	50294520	50294520
32,5		ISO 32	3,5	50046055	50294520	50294520
34,6			3,5	50281585*	59294520	50294520
37,0	Pg 29		3,5	50311220	50294520	50294520
40,5		ISO 40	3,5	50046080	50294520	50294520
43,2			3,5	50281607*	50294520	50294520
47,0	Pg 36		3,5	50311239	50294520	50294520
49,6			3,5	50281623*	50294520	50294520
50,8		ISO 50	3,5	50046110	50294520	50294520
54,0	Pg 42		3,5	50311247	50294520	50294520
60,0	Pg 48		3,5	50311255	50294520	50294520
61,5			3,5	50281658*	50294520	50294520
64,0		ISO 63	3,5	50046144	50294520	50294520

Rectangular punches



Suitable for:

- Mild steel (St37), plastic and aluminum up to 3.0 mm thickness and V2A 1.5 mm thickness
- Punching of burr-free, clean and accurate holes

Dimensions in mm	Max. material thickness	Complete Unit ¹⁾
11.1 x 22.2	1.5	50600257
17.0 x 19.0	2.0	50610281
19.1 x 29.0	2.0	50600311
19.1 x 33.3	2.0	50600346
21.9 x 25.9	2.0	50600370
22.0 x 30.0	2.0	50600400
22.0 x 42.0	2.0	50600435
25.1 x 29.0	2.0	50600478
31.8 x 35.1	2.0	50600508
29.0 x 71.0	3.0	52045296
30.0 x 90.0	3.0	52045297
33.3 x 66.7	3.0	50600532
35.0 x 52.0	3.0	50600567
35.0 x 65.0	3.0	50600591
35.0 x 82.0	2.0	50600621
35.0 x 112.0	2.0	50600656
46.0 x 92.0	3.0	50600680
57.2 x 88.9	3.0	50600710
68.0 x 138.0	2.0	50600745

Square punches



Suitable for:

- Mild steel (St37), plastic and aluminum up to 3.0 mm thickness and V2A 1.5 mm thickness
- Punching of burr-free, clean and accurate holes

Dimensions in mm	Max. material thickness	Complete Unit ¹⁾
12.7 x 12.7	1.5	50600010
15.9 x 15.9	2.0	50610045
19.1 x 19.1	2.0	50610076
22.4 x 22.4	2.0	50610106
24.0 x 24.0	2.0	50610137
25.4 x 25.4	2.0	50600168
45.0 x 45.0	3.0	50115723
46.0 x 46.0	3.0	50600192
50.8 x 50.8	3.0	50601687
68.0 x 68.0	3.0	50601717
92.0 x 92.0	3.0	50601741
104.8 x 104.8	2.0	50601776
138.0 x 138.0	2.0	50602349

Special shape punches for heavy duty connectors



Rectangular punches for heavy duty connectors feature a drilling jig built into the die, for drilling the 4 locating holes.

Suitable for:

- Mild steel (St37) up to 3.0 mm thickness and aluminum up to 3.5 mm

Dimensions in mm	Max. material thickness	Operation	Complete Unit ¹⁾	Draw stud
36.0 x 52.0	3.0	hydraulic	52033816	52033836
36.0 x 65.0	3.0	hydraulic	52033817	52033836
36.0 x 86.0	3.0	hydraulic	52033818	52033836
36.0 x 91.0	3.0	hydraulic	52033819	52033836
36.0 x 112.0	3.0	hydraulic	52033820	52033836
46.0 x 86.0	3.0	hydraulic	52033831	52033836
46.0 x 112.0	3.0	hydraulic	52033832	52033836

HAN Yellock® 30 with 4 centering points

Dimensions in mm	Max. material thickness	Operation	Complete Unit ¹⁾	Draw stud
47.2 x 56.4	3.0 / 3.0 VA	hydraulic	52058591	52033836
47.2 x 85.5	3.0 / 3.0 VA	hydraulic	52058592	52033836

Speed Punch - up to 3x faster !



SPEED PUNCH



- “No-thread” design eliminates cross-threading
- Simple operation and great time saving due to speed lock system

Suitable for:

- Mild steel (St37), plastic and aluminum up to 3.5 mm thickness

Dimensions in mm	PG	ISO	Max. material thickness	Complete Unit (Punch and die)
16,2		ISO 16	3,5	52055431
20,4		ISO 20	3,5	52055432
22,5	PG 16		3,5	52055433
25,4		ISO 25	3,5	52055434
32,5		ISO 32	3,5	52055435
40,5		ISO 40	3,5	52055436
50,8		ISO 50	3,5	52055437
64,0		ISO 63	3,5	52055438

¹⁾ Complete unit including punch, die, draw stud and counter nut

Draw studs for hydraulic operation



51300430
Draw stud 9.5 X 71 mm



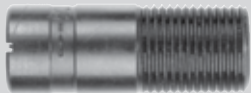
50318721
Draw stud 19.0x105 mm



50294520
Draw stud 19.0x140 mm



50294512
Draw stud 11.1x108 mm



50339672
Adapter 19.0x48 mm with internal thread 9.5 mm

SPEED LOCK and Draw stud for Speed Punch



52055439
SPEED LOCK & Draw stud 9.5 mm for ISO 16/20/25 and PG 16



52055440
SPEED LOCK & Draw stud 19 mm for ISO 32/40/50/63



www.klauke.com

Strong brands for your success:

Klauke[®]



Gustav Klauke GmbH

Auf dem Knapp 46
D-42855 Remscheid

Telefon: +49 (0) 2191/907-0

Telefax: +49 (0) 2191/907-141

E-Mail: info@klauke.textron.com

Internet: www.klauke.com