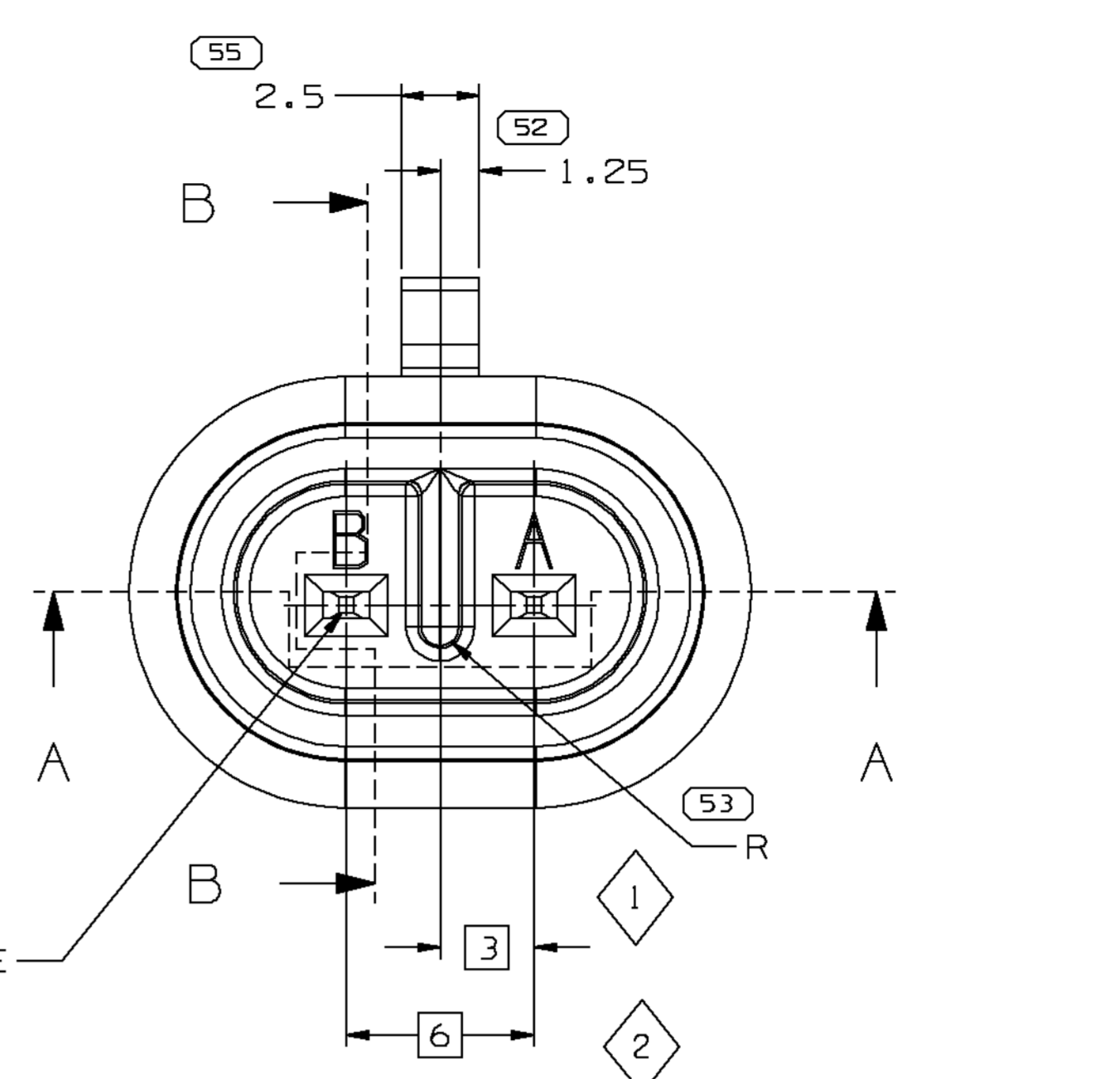
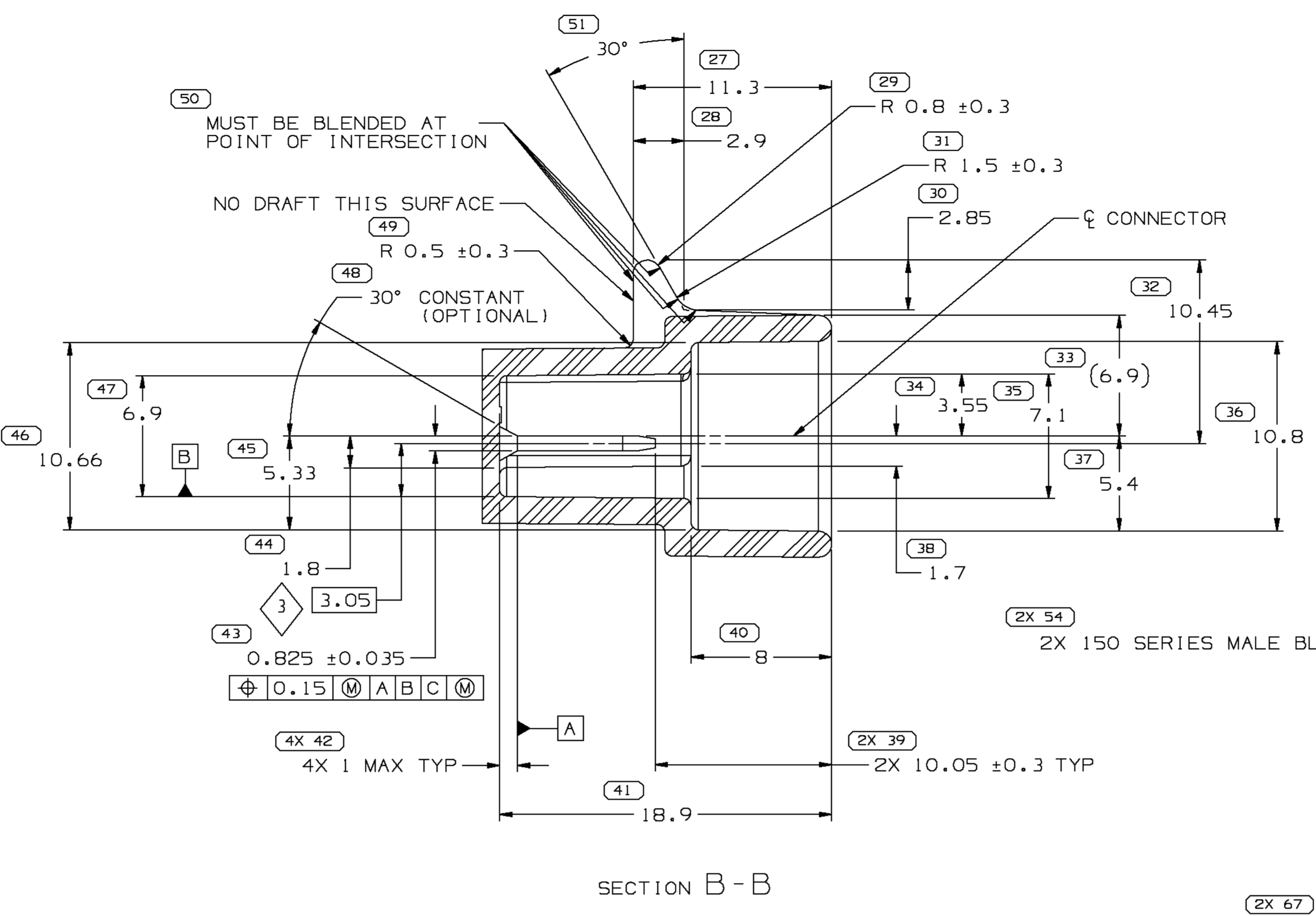


SYMBOL DEFINITION		MISSING SYMBOLS	
A DIMENSION WITHOUT AN INSPECTION REPORT SYMBOL DOES NOT REQUIRE INSPECTION. IT MAY BE CONTROLLED ON THE INDIVIDUAL COMPONENT DRAWING.	TOTAL NO OF INSPECTIONS REQUIRED	NO MISSING SYMBOL NUMBER	
	82		
	LAST NO. USED		
	72		

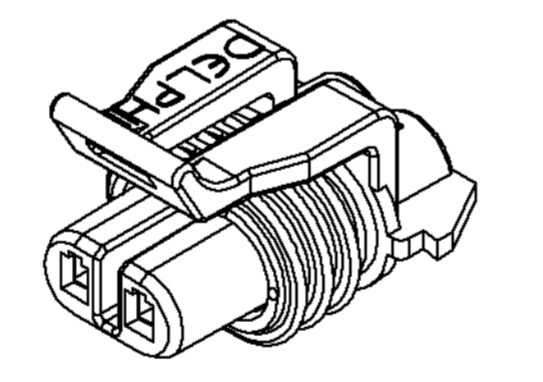
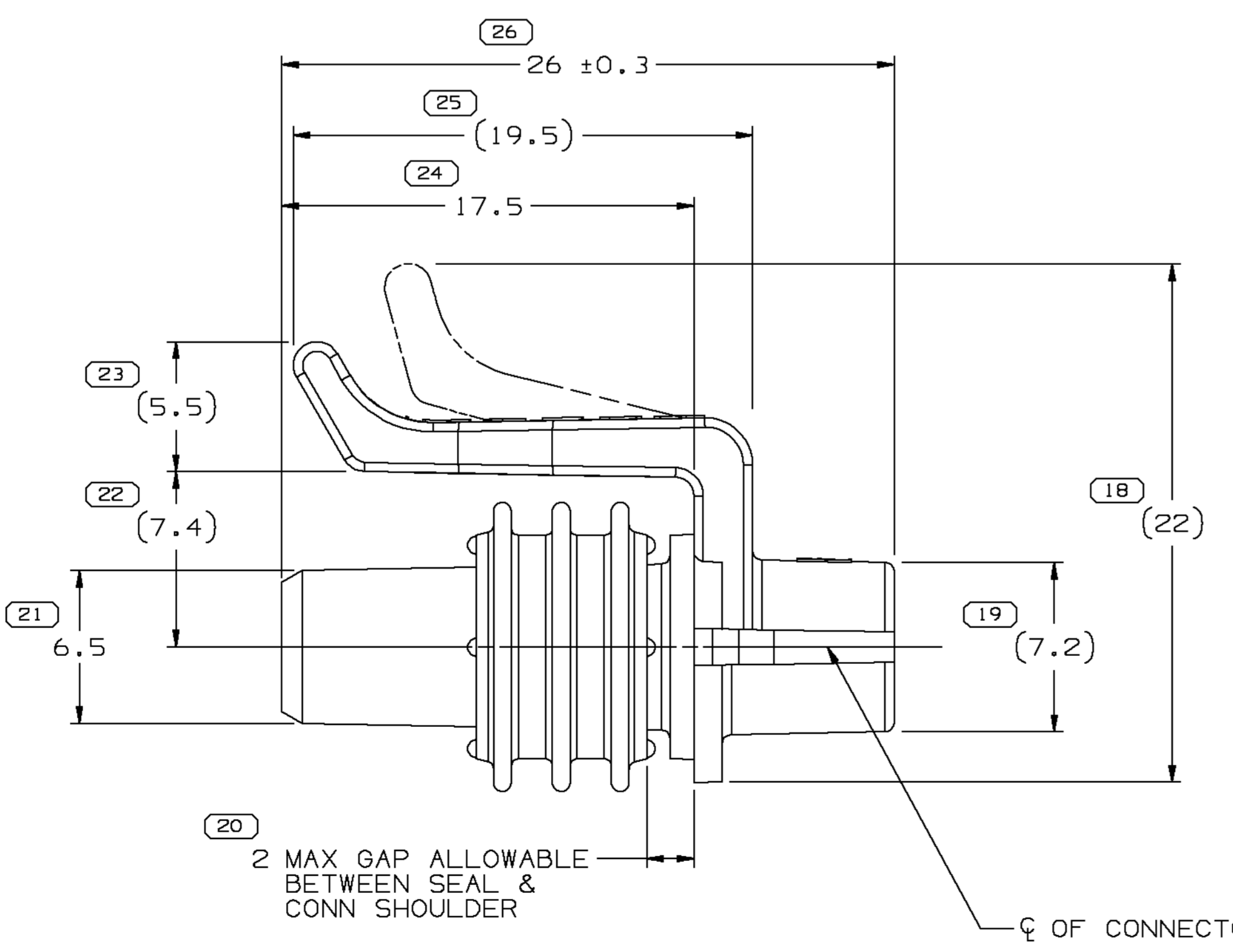
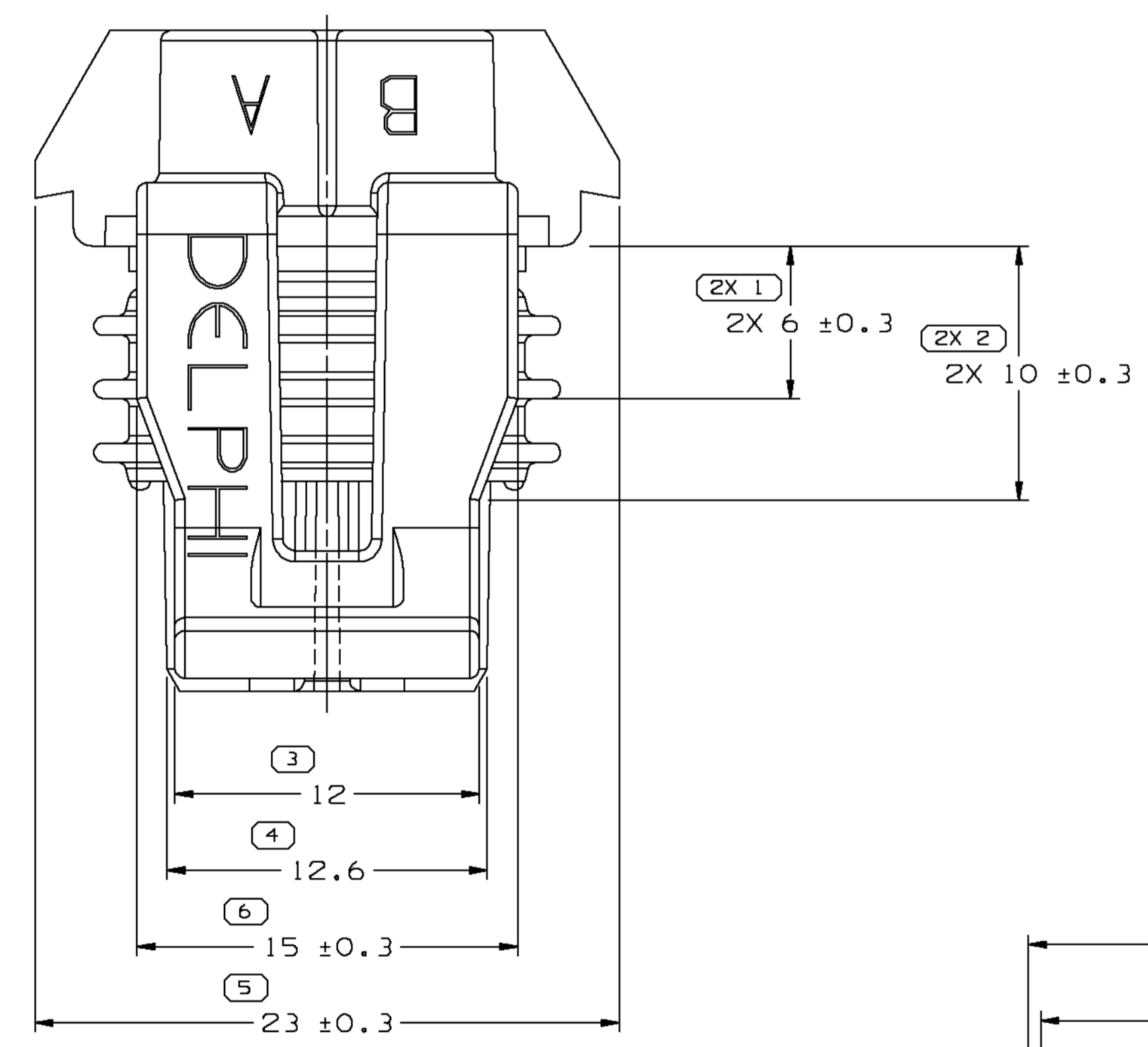
KEY PRODUCT CHARACTERISTICS				
SAFETY/COMPLIANCE	FIT/FUNCTION	TOTAL ON DRAWING	3	
S/C CHECKPOINTS	F/F CHECKPOINTS	LAST NO. USED	3	
NO & TYPE	DESCRIPTION	RATIONALE	PTS	ZONE

DWG STATUS			REVISION HISTORY			AUTH			DR			APVD		
DATE	STG	REV	DATE	REV	ZONE	226502	FRG	FRG	GM	GM	GM	GM	GM	
11MY02	R	08				CLEARED REVISION COLUMN: ALL PARTS - REDRAWN TO PD								

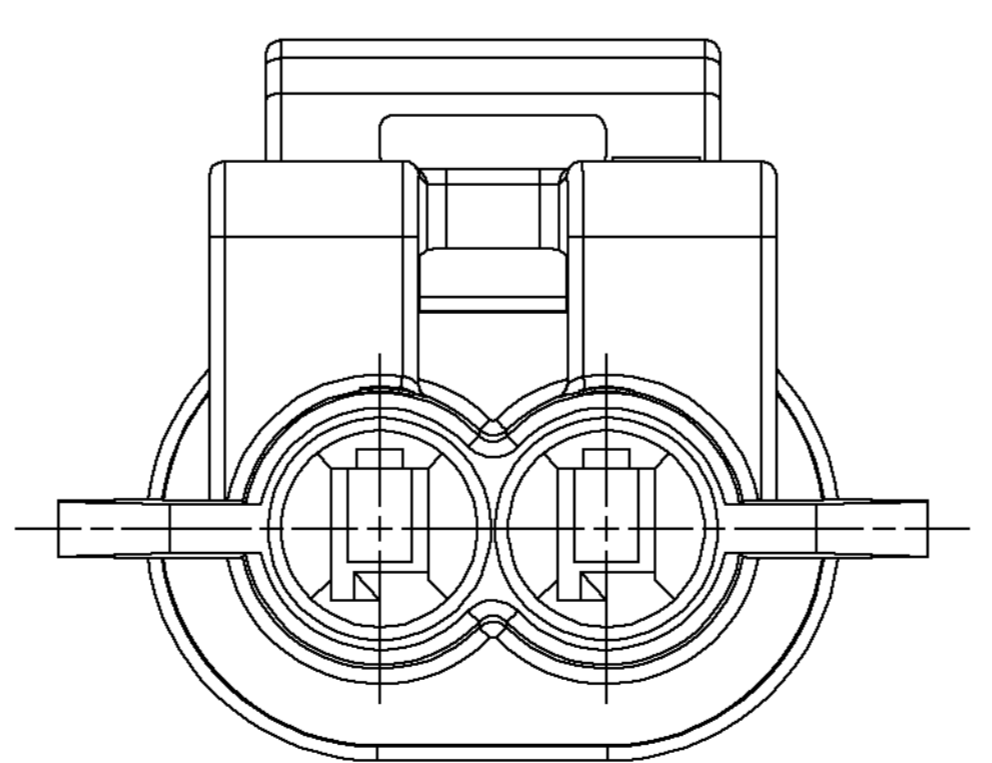


- NOTES
- UNLESS OTHERWISE SPECIFIED AND/OR INDICATED: DIMENSIONS ARE TO FACE OF VIEW SHOWN AND AUTOMATICALLY ROUNDED BY COMPUTER FOR INSPECTION (SEE MATH MODEL FOR PRECISE DIMENSIONS). FOR ALL OTHER DIMENSIONS NOT SHOWN BUT REQUIRED FOR TOOL BUILD, SEE MATH MODEL FOR PRECISE TOOL PATH DATA. ALL RADII 0.4
 - RECOMMENDED MATERIAL - GLASS FILLED NYLON OR POLYESTER
 - WHEN USING THIS INFORMATION FOR A NEW DESIGN, REQUEST THE LATEST COPY OF THIS PRINT FROM PACKARD ELECTRIC

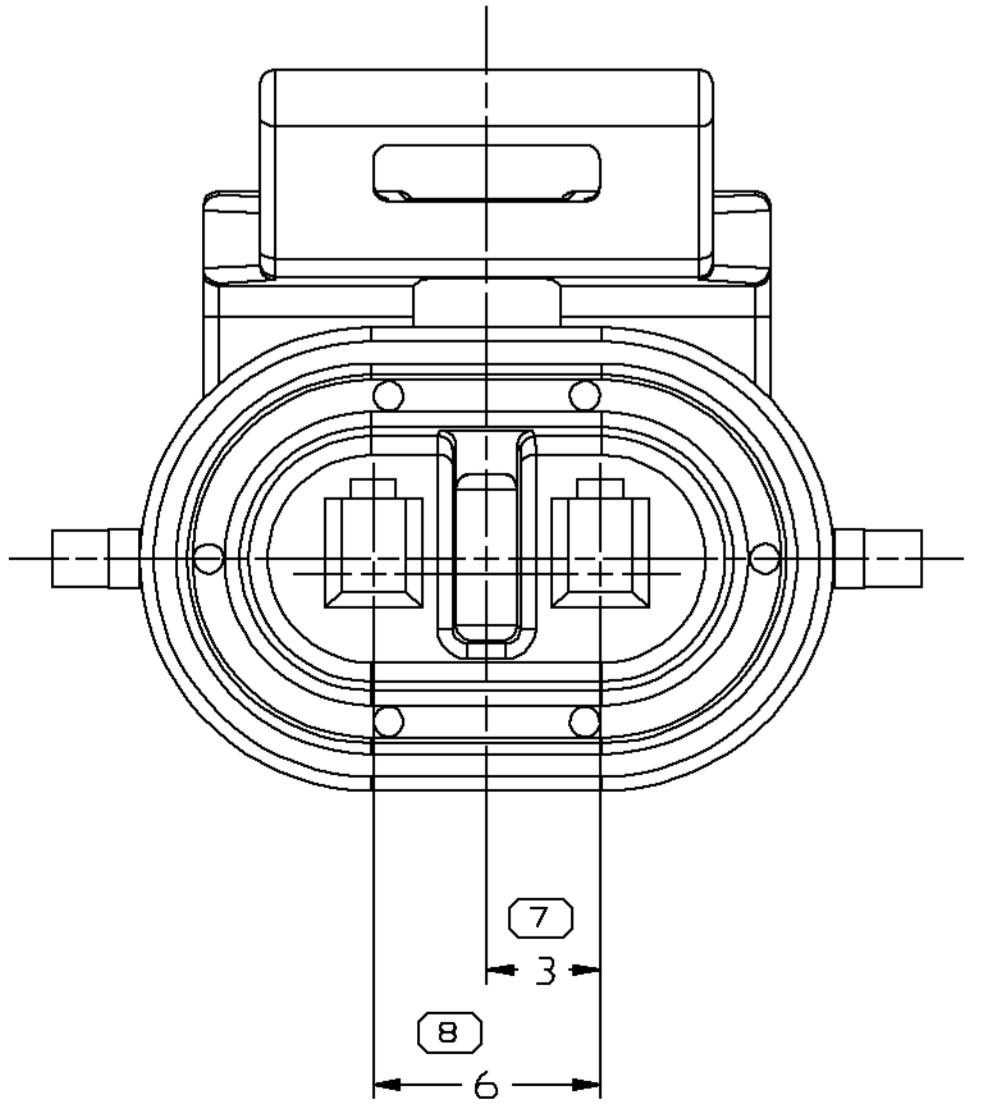
MATING CONNECTOR INFORMATION
 INSPECTION SYMBOLS SHOWN IN THESE VIEWS ARE FOR REFERENCE ONLY



VIEW SCALE DOES NOT REFLECT ACTUAL PART SIZE



- NOTES
- UNLESS OTHERWISE SPECIFIED AND/OR INDICATED: DIMENSIONS ARE TO FACE OF VIEW SHOWN AND AUTOMATICALLY ROUNDED BY COMPUTER FOR INSPECTION (SEE MATH MODEL FOR PRECISE DIMENSIONS). FOR ALL OTHER DIMENSIONS NOT SHOWN BUT REQUIRED FOR TOOL BUILD, SEE MATH MODEL FOR PRECISE TOOL PATH DATA.
 - WHEN PARTS ARE SHIPPED THEY MUST BE PACKED IN PLASTIC BAGS OR SHIPPING CONTAINERS MUST BE LINED WITH PLASTIC LINERS. BAGS OR LINERS MUST BE SEALED TO AVOID FOREIGN MATTER.
 - SEALING CODE 3 - DESIGN WILL PASS SALT FOG AND IMMERSION TEST AFTER CONDITIONING AS SPECIFIED IN ESA-644 (WEATHER-PACK), ESA-710 (METRI-PACK), ESA-650 (UNDERHOOD MICRO-PACK), C-4006 (WORLD CONNECTOR), ETC WHEN MATED TO MATING PART OR EQUIVALENT
 - MATING COMPONENTS OR EQUIVALENT: CONNECTOR 12052647, DP 22058091 WASHER PUMP, DR EGR SOLENOID OR EQUIVALENT AUX CLG FAN SW. OR EQUIVALENT
 - THIS PART ACCEPTS THE FOLLOWING COMPONENTS OR EQUIVALENT: TERMINAL 12048074, CABLE SEAL 12048086, SECONDARY LOCK 12052634
 - MAXIMUM CABLE DIAMETER 2.8 MM
 - FOR PART NUMBERS WITH ADHESIVE, USE PM003510 OR ADHESIVE APPROVED BY MATERIALS ENGINEERING TO GLUE CONNECTOR SEAL TO CONNECTOR



PART NO WITH ADHESIVE	REV	STATUS	PART NO WITHOUT ADHESIVE	REV	STATUS	NUMBER OF CAVITIES	CAVITIES BLOCKED	CONNECTOR BODY	CONNECTOR SEAL	MATING CONNECTOR	CONNECTOR COLOR
15324696			12052635			2	NONE	12052635	15305167	SEE NOTE 4	BLACK
12129924	A1		12052635			2	NONE	12052635	12129925	SEE NOTE 4	BLACK
12089501	B1		12089500			1	B	12089500	12103067	SEE NOTE 5	BROWN
12186685	A1		12052641			2	NONE	12052635	12103067	SEE NOTE 4	BLACK

PROCESS SENSITIVE DIMENSION	DIMENSIONAL RANGE (MM)	CHART	ET
FROM	0	> 0	> 30
TO	20	> 30	> 100
	100	> 150	> 200
	200	> 250	> 300
	300	> 400	
	10.15	± 0.2	± 0.3
	10.4	± 0.5	± 0.8
	11	± 1	± 1.2
		ANGULAR TOLERANCE	± 2'

PART DRAWING	
STYLE	
VOLUME (COP)	
ROUTING	6900
UNLESS OTHERWISE SPECIFIED	
THIS DOCUMENT IS IN ACCORDANCE WITH ASME Y14.5M-1994 AS AMENDED BY THE GW GLOBAL DIMENSIONING AND TOLERANCING ADDENDUM 1997. ALL DIMENSIONAL TOLERANCES AND RELATED DATUMS APPLY UNLESS OTHERWISE SPECIFIED. THIS DOCUMENT DOES NOT APPLY WHEN RELATIONSHIP BETWEEN FEATURES IS ESTABLISHED BY ORIENTATION OR LOCATION TOLERANCES. SEPARATE POSITION CALLOUTS MAY BE USED SEPARATELY, REGARDLESS OF DATUM REFERENCE.	
THIRD ANGLE PROJECTION	DO NOT SCALE
USE MATH DATA	UNGRAPHS

DELPHI
 DELPHI PACKARD ELECTRIC SYSTEMS
 WARREN, OH

OR	DATE
APVD1 J. COLDSNOW	11AP91
APVD2 J. COLDSNOW	11AP91
APVD3 R. LANDRIES	16AP91
APVD4	
APVD5	

DRAWING NAME: ASM CONN F M/P 150
 DRAWING NUMBER: 12089588
 SIZE: A0
 SCALE: 5:1
 FRAME NO: 1
 SHEET NO: 1
 OF: 1
 DATE: 11/08