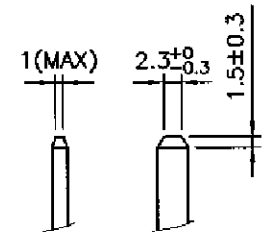
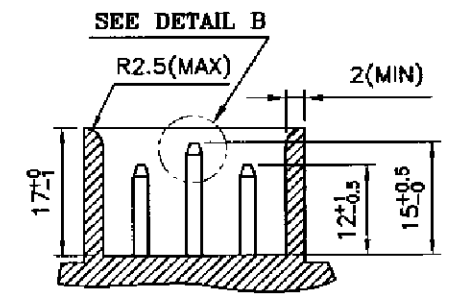
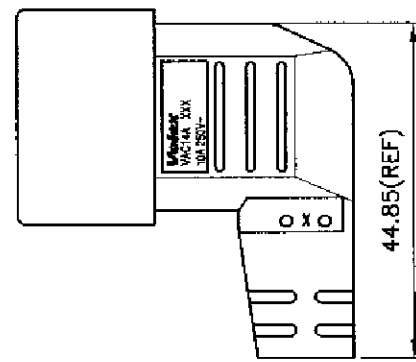
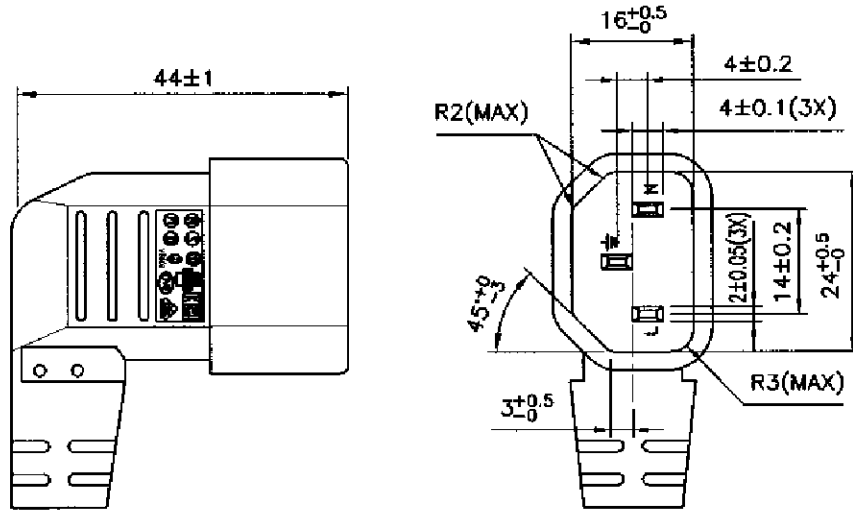


REV.	DESCRIPTION	DATE
	UPDATE FORMAT AS SHOWN.	
B	REMOVE THE CLOSED FACTORY FM. MANU. LOC. MARK.	03/11/06
C	REMOVE THE CLOSED FACTORY FROM MANU. LOCATION MARK.	23/07/09



Volex
VAC14A XXX
10A 250V-

MARKING DETAILS :

NOTES :

- 1.) ALL DIMENSIONS IN mm.
- 2.) X - CAVITY NO. (OPTIONAL)
- 3.) XXX - MANUFACTURING LOCATION.

HG	HENG GANG (CHINA)	X	DRAWN	QIAN SM	23/07/09	FILE NAME :	TITLE :
SM1	ZHONGSHAN (CHINA)	X	CHECK	hongli	27/07/09	A-CONNECTOR/ EURO/GENERAL/ VAC14A-EURO	MOLDED PLUG CONNECTOR VAC14A
VH	HANOI (VIETNAM)		APPR	wata	30/7/9	N.T.S.	
B	BATAM (INDONESIA)		REV.	C	SCALE		
VC	CHENNAI (INDIA)	X	REFERENCE :				Volex (Asia) Pte Ltd
MANUFACTURE LOCATION MARK (' X ' IS APPLICABLE ONLY)			EUROPEAN APPROVAL				
							<small>Confidential property of Volex. Information contained herein shall not be disclosed to others, reproduced or used for any other purposes except as authorized in writing by an authorized official of volex asia.</small>

