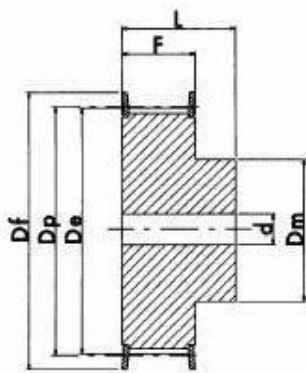
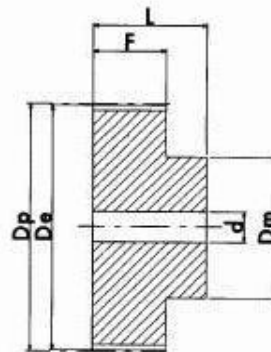


Synchroflex Timing Pulleys T5

for 10mm wide belt
Centre drilled or Pilot Bore
in Aluminium with Zinc plated Steel Flanges



EXECUTION 1F



EXECUTION 2

Dimensions

Please note : All dimensions subject to change.

Pulleys may be Bored or Unbored.

If a dimension is critical to your application please contact our sales department for confirmation.
for special pulleys or reworked pulleys

| Code | Type | No. Teeth | Dp | De | Df | Dm | F | L | Pilot Bore | No. Flanges |
|-----------|------|-----------|-------|-------|----|----|----|----|------------|-------------|
| 21T5/10-2 | 1F | 10 | 15.92 | 15.05 | 20 | 8 | 15 | 21 | - | 2 |
| 21T5/12-2 | 1F | 12 | 19.10 | 18.25 | 23 | 12 | 15 | 21 | - | 2 |
| 21T5/14-2 | 1F | 14 | 22.28 | 21.45 | 26 | 14 | 15 | 21 | - | 2 |
| 21T5/15-2 | 1F | 15 | 23.87 | 23.05 | 28 | 16 | 15 | 21 | 6 | 2 |
| 21T5/16-2 | 1F | 16 | 25.46 | 24.60 | 30 | 18 | 15 | 21 | 6 | 2 |
| 21T5/18-2 | 1F | 18 | 28.65 | 27.80 | 33 | 20 | 15 | 21 | 6 | 2 |
| 21T5/19-2 | 1F | 19 | 30.24 | 29.40 | 34 | 22 | 15 | 21 | 6 | 2 |
| 21T5/20-2 | 1F | 20 | 31.83 | 31.00 | 36 | 24 | 15 | 21 | 6 | 2 |
| 21T5/24-2 | 1F | 24 | 38.20 | 37.35 | 42 | 26 | 15 | 21 | 6 | 2 |
| 21T5/25-2 | 1F | 25 | 39.79 | 38.95 | 43 | 26 | 15 | 21 | 6 | 2 |
| 21T5/27-2 | 1F | 27 | 42.97 | 42.15 | 47 | 30 | 15 | 21 | 8 | 2 |
| 21T5/30-2 | 1F | 30 | 47.75 | 46.90 | 51 | 34 | 15 | 21 | 8 | 2 |
| 21T5/32-2 | 1F | 32 | 50.93 | 50.10 | 55 | 38 | 15 | 21 | 8 | 2 |
| 21T5/36-2 | 1F | 36 | 57.30 | 56.45 | 61 | 38 | 15 | 21 | 8 | 2 |
| 21T5/40-2 | 1F | 40 | 63.66 | 62.85 | 67 | 40 | 15 | 21 | 8 | 2 |
| 21T5/48-0 | 2 | 48 | 76.39 | 75.55 | - | 50 | 15 | 21 | 8 | 0 |
| 21T5/60-0 | 2 | 60 | 95.49 | 94.65 | - | 65 | 15 | 21 | 8 | 0 |