



ENGLISH

Data Sheet

Flexible Polyolefin Heatshrink Tubing 3:1



Applications

Designed to provide specially expansion ratio for applications of military and commercial such as electrical insulation and protects in-line components, disconnect terminals, and splice. Used for jacketing wire bundles and light-duty harness and identifying or color-codes wires, cables, terminals, and components. 3:1 shrink ratio more suitable for application to irregular,awkward shapes.

Characteristics

- Flexible, highly flame-retardant (colors only)
- Heat resistant polyolefin tubing
- Very good chemical and solvent resistance
- Excellent physical and electrical performance

Operating temperature range

Operating temperature : -55 to +135 °C

Minimum shrink temperature : 70 °C

Minimum fully recovery temperature : 110 °C

Approvals

UL224

File E337635

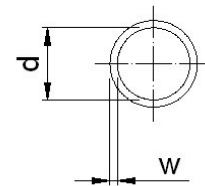
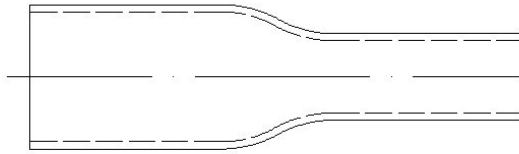
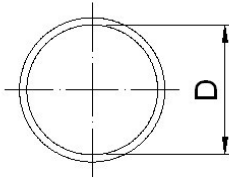




ENGLISH

Technical Specification

Property	Requirement	Test method	Typical data
Concentricity	70% min.	ASTM D 2671	≥70%
Tensile strength	10.4MPa min.	ASTM D 638	≥14.0MPa
Elongation	200% min.	ASTM D 638	≥400%
Heat shock 250°C, 4hrs	No cracking, dripping or flowing	ASTM D 2671	Pass
Low temperature flexibility -55°C, 4hrs	No cracking	ASTM D 2671	Pass
Aging 158°C, 168hrs			
Tensile strength after aging	70% of original min.	ASTM D 638	≥90%
Elongation after aging	100% min.	ASTM D 638	≥300%
Dielectric voltage withstand	2500V, 60sec no breakdown	UL224	Pass
Dielectric strength	19.7KV/mm min.	ASTM D 2671	25KV/mm
Volume resistivity	10 ¹⁴ Ω·cm min.	ASTM D 876	≥10 ¹⁴ Ω·cm
Corrosion	No corrosion	ASTM D 2671	Pass
Flammability	VW-1	UL224	Pass



ENGLISH

Part Number	Color	Dimensions		
		As Supplied (mm) D (I.D.min.)	After Recovery (mm) d (I.D.max.)	Wall Thickness Shrunk w (mm)
700-4453	Clear	3.0	1.0	0.60±0.10
700-4456	Clear	6.0	2.0	0.70±0.10
700-4450	Clear	9.0	3.0	0.80±0.15
700-4469	Clear	12.0	4.0	0.85±0.15
700-4462	Clear	18.0	6.0	1.00±0.15
700-4466	Clear	24.0	8.0	1.20±0.20
700-4475	Yellow	3.0	1.0	0.60±0.10
700-4478	Yellow	6.0	2.0	0.70±0.10
700-4472	Yellow	9.0	3.0	0.80±0.15
700-4481	Yellow	12.0	4.0	0.85±0.15
700-4484	Yellow	18.0	6.0	1.00±0.15
700-4488	Yellow	24.0	8.0	1.20±0.20
700-4497	Blue	3.0	1.0	0.60±0.10
700-4490	Blue	6.0	2.0	0.70±0.10
700-4494	Blue	9.0	3.0	0.80±0.15
700-4504	Blue	12.0	4.0	0.85±0.15
700-4507	Blue	18.0	6.0	1.00±0.15
700-4501	Blue	24.0	8.0	1.20±0.20
700-4510	Red	3.0	1.0	0.60±0.10
700-4513	Red	6.0	2.0	0.70±0.10
700-4517	Red	9.0	3.0	0.80±0.15
700-4526	Red	12.0	4.0	0.85±0.15
700-4529	Red	18.0	6.0	1.00±0.15
700-4523	Red	24.0	8.0	1.20±0.20
700-4532	Black	3.0	1.0	0.60±0.10
700-4535	Black	6.0	2.0	0.70±0.10
700-4539	Black	9.0	3.0	0.80±0.15
700-4548	Black	12.0	4.0	0.85±0.15
700-4541	Black	18.0	6.0	1.00±0.15
700-4545	Black	24.0	8.0	1.20±0.20
700-4554	White	3.0	1.0	0.60±0.10
700-4557	White	6.0	2.0	0.70±0.10
700-4551	White	9.0	3.0	0.80±0.15
700-4560	White	12.0	4.0	0.85±0.15
700-4567	White	18.0	6.0	1.00±0.15
700-4573	White	24.0	8.0	1.20±0.20
700-4582	Green / Yellow	3.0	1.0	0.60±0.10
700-4589	Green / Yellow	6.0	2.0	0.70±0.10
700-4595	Green / Yellow	9.0	3.0	0.80±0.15
700-4608	Green / Yellow	12.0	4.0	0.85±0.15
700-4611	Green / Yellow	18.0	6.0	1.00±0.15
700-4618	Green / Yellow	24.0	8.0	1.20±0.20