

NOTES:

1. RATINGS:-

(A) CURRENT:

MAX. CURRENT AT AMBIENT TEMPERATURE (25°C) - 2AMPS.

(B) VOLTAGE (AT SEA LEVEL 1013 MBAR):

WORKING VOLTAGE - 250V D.C NOMINAL OR A.C PEAK.

VOLTAGE PROOF - 500V A.C R.M.S AT 50 Hz.

(C) ENVIRONMENTAL:

ENVIRONMENTAL CATEGORY 40/85/21.

LOW AIR PRESSURE SEVERITY 300 mbar

(D) ENDURANCE:

MECHANICAL 300 OPERATIONS GOLD PLATED.

50 OPERATIONS TIN PLATED.

HIGH TEMP. LONG TERM 1000 HRS AT 70°C (2 AMPS).

HIGH TEMP. SHORT TERM 250 HRS AT 85°C -

(NO ELECTRICAL LOAD).

2. CHARACTERISTICS:-

(A) RESISTANCE:

MAX. CONTACT RESISTANCE

(AS MEASURED BETWEEN 2 ADJACENT PINS).

	TIN	GOLD
INITIALLY:	20 MILLIOHMS	15 MILLIOHMS
AFTER CONDITIONING:	25 MILLIOHMS	20 MILLIOHMS

MIN. INSULATION RESISTANCE

(AS MEASURED BETWEEN 2 ADJACENT PINS
NOT ELECTRICALLY CONNECTED).

INITIALLY:	10 ³ MOHMS
AFTER CONDITIONING:	10 ³ MOHMS

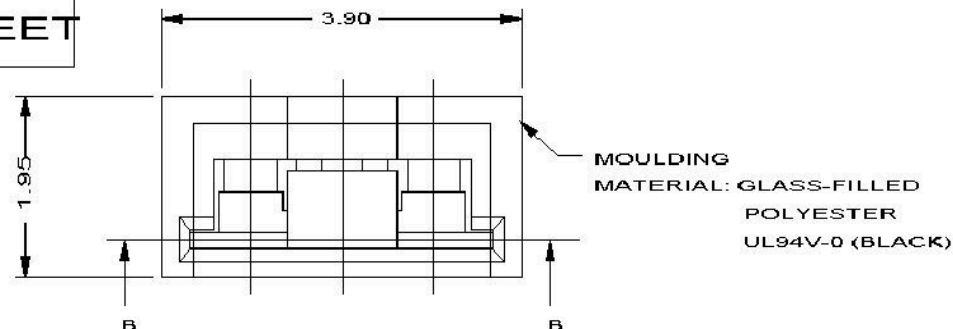
(B) MECHANICAL:

INSERTION AND WITHDRAWAL FORCE.

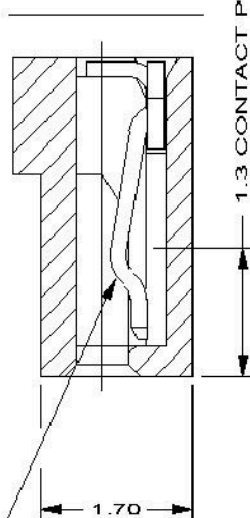
INSERTION FORCE 10 NEWTONS MAX.

WITHDRAWAL FORCE 1 NEWTON MIN.

CUSTOMER INFORMATION SHEET



SECTION A-A

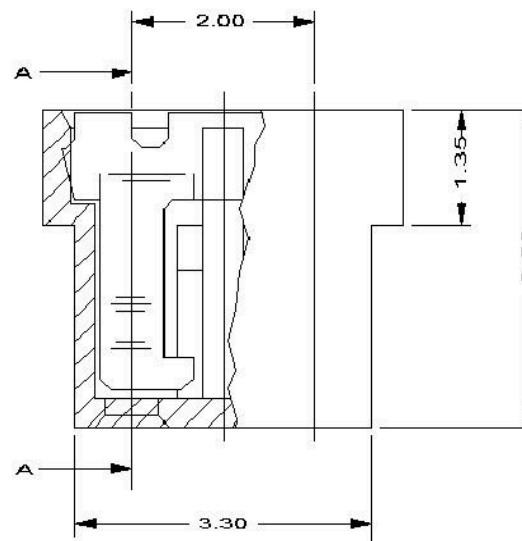


CLIP

MATERIAL: BERYLLIUM COPPER

PLATING FINISH:

06 - 90/10 TIN ON NICKEL

05 - GOLD ON CONTACT FACE ONLY
OVER NICKEL

SECTION B-B

ORDER CODE

M22-19000XX

FINISH:

06 - TIN

05 - GOLD

2	9.12.94	2799
1	27.7.91	

ISS. DATE C/N

DRAWN: I.SANDY

CHECKED:

APPD.:

CUSTOMER REF.

ASSEMBLY DRG:



TOLERANCES:

X.	±1mm
X.X	±0.25mm
X.XX	±0.10mm
X.XXX	±0.01mm
ANGLES	±1°

IF IN DOUBT - ASK

MATERIAL:

SEE ABOVE

FINISH: SEE ABOVE

S/AREA:

mm²

TITLE:

2mm PITCH JUMPER SOCKET
ASSEMBLY (COLOUR BLACK)

DRAWING NUMBER:

M22-19000XX

SHT.

2

OF

2