

Datasheet

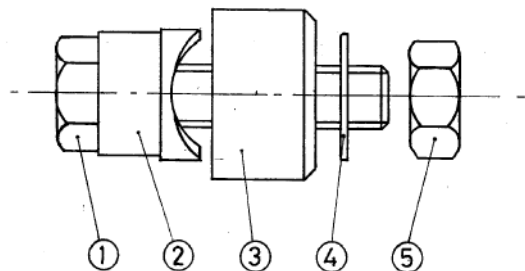
16.5mm Hand Circular Punch & Die Combinations

RS Stock number 543-563



Specification:

ALL PARTS TO BE CHEMICALLY BLACK.
APPROX. WEIGHT 125 GRMS.



ITEM N°	PART N°	DESCRIPTION	MATERIAL	N° OFF
①	STD	M8x1-25x40 HT SET SCREW LONG HEXAGON HEAD	STEEL	1
②	M916 / 5-1	PUNCH	EN1A NON LEADED	1
③	M916 / 5-2	DIE	EN1A NON LEADED	1
④	STD	M8 WASHER FORM 'B'	MS	1
⑤	STD	M8 x 1-25 NUT	MS	1

Dimensions:

Ø16.5mm HOLE CUTTER.

