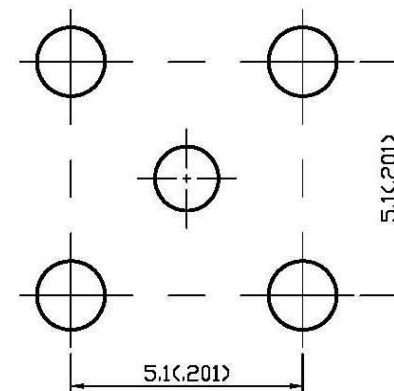
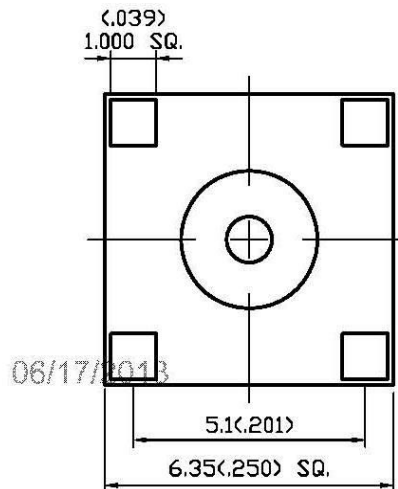
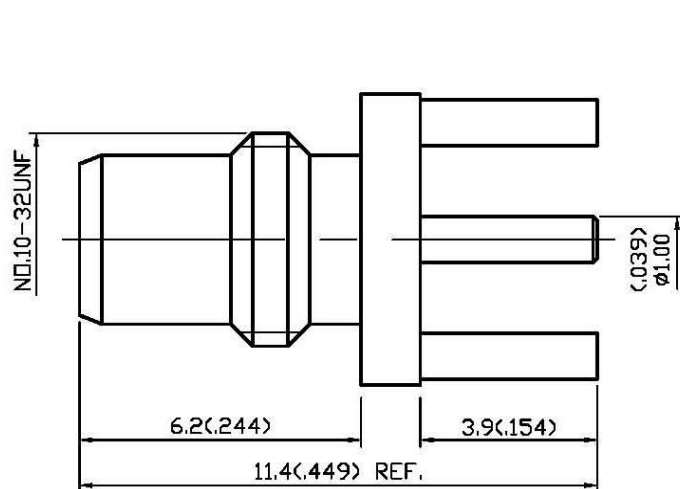


NO	DESCRIPTION	DATE
①	BACKGROUND FORMAT UPDATED	07.17.02'
②	MODIFICATION INSULATION ② CENTER CONTACT ③	08.01.05'
③	BACKGROUND FORMAT UPDATED	06.02.09'
④	WORKING VOLTAGE → VOLTAGE RATING DEL PROOF VOLTAGE	06.14.13'



(4) $\phi 1.5(.059)$ MIN.
(1) $\phi 1.4(.055)$ MIN.

MOUNTING HOLE

1.0 ELECTRICAL

- 1.1 FREQUENCY RANGE: DC-10 GHz
- 1.2 NOMINAL IMPEDANCE: 50 OHM
- 1.3 VOLTAGE RATING: 335 VOLTS MAX. ④
- 1.4 VSWR: 1.3 MAX.

2.0 MATERIALS

- 2.1 BODIES: BRASS PER JIS-C3604
- 2.2 CENTER CONTACT: BRASS PER JIS-C3604
- 2.3 INSULATION: TEFLON PER ASTM D1457 AND ASTM D1710

3.0 FINISHES AND OTHERS

- 3.1 SEE BELOW TABLE FOR DETAILS.

4.0 MECHANICAL

- 4.1 INTERFACE IN ACCORDANCE WITH: MIL-STD-346A

5.0 ENVIRONMENTAL

- 5.1 OPERATING TEMPERATURE RANGE: -65° C TO +165° C

3	CENTER CONTACT	BRASS	1	GOLD 30 μ " MIN.
2	INSULATION	TEFLON	1	NONE
1	BODY	BRASS	1	GOLD 3 μ " MIN.
NO	DESCRIPTION	MATERIAL	Q'TY	FINISH



APPROVED

by _____ DATE: _____

DESCRIPTION		SMC STRAIGHT PCB MOUNT JACK RECEPTACLE								
製圖	DRAWN	TOLERANCE		品名	26-09	T.G.G	日期	DATE	版次	REV.
	Yoko	.X	± 0.2	TITLE	\ROHS COMPLIANT (50Ω)		04.16.96'		A-4	
檢圖	CHECK	.XX	± 0.1	單位	UNIT	DWG.NO.		26-0004		
	Arc	.XXX	± 0.05	mm(in)						
認定	APPROVAL	.XXX	± 0.05	比例	SCALE					
	Angela	ANGLE	$\pm 5^\circ$	8:1						