

## Datasheet

# Miniature Toggle Switches

RS Stock number 734-7154

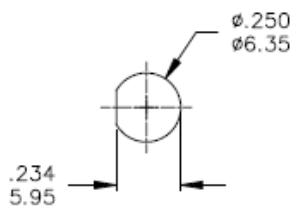
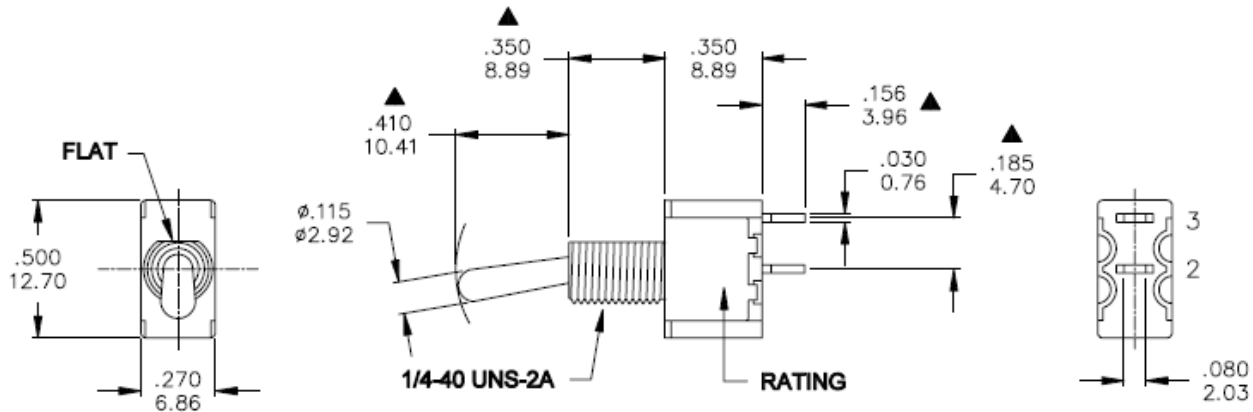


### Specifications:

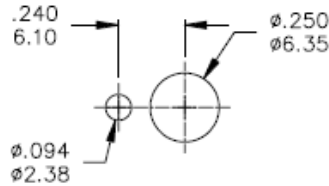
Mechanical Life:	40, 000 make-and-break-cycles
Contact Resistance:	10m $\Omega$ max. initial @ 2-4VDC 100mA for both silver and gold plated contacts
Insulation Resistance:	1,000M $\Omega$ min.
Dielectric Strength:	1,000 Vrms min. @ sea level
Operating Temperature:	-30°C to 85°C

### Materials

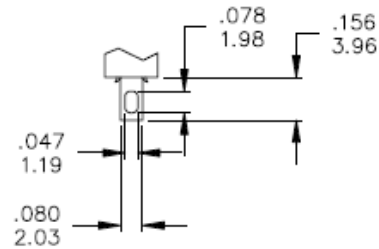
Case:	Diallyl Phthalate (DAP) (UL94v-0)
Actuator:	Brass, chrome plated
Bushing:	Brass, nickel plated
Housing:	Stainless Steel
Terminal/Contact:	Brass, Silver or Gold Plated
RoHS:	2002/95/EC



Without locking ring.



With standard locking ring.



SOLDER LUG

PANEL MOUNTING

Model No.	POS.1	POS.2	POS.3
1MS9	ON	NONE	OFF
Term. Comm.	2-3	N/A	OPEN
SCHEMATIC			

SWITCH FUNCTION

	CONTACT PLATING	TERMINAL PLATING	RATINGS
<b>Q</b>	Silver	Q = Silver	5 Amps @120 VAC or 28 VDC 2 Amps @250VAC
<b>S</b>		S = Silver,pure-tin	
<b>C</b>	Gold over Silver	C = Gold over silver	
<b>K</b>		K = Gold over silver,pure-tin	
<b>R</b>	Gold	R = Gold	0.4 Volt-Amps(VA) max. @20V max. (AC or DC)
<b>G</b>		G = Gold,pure-tin	