



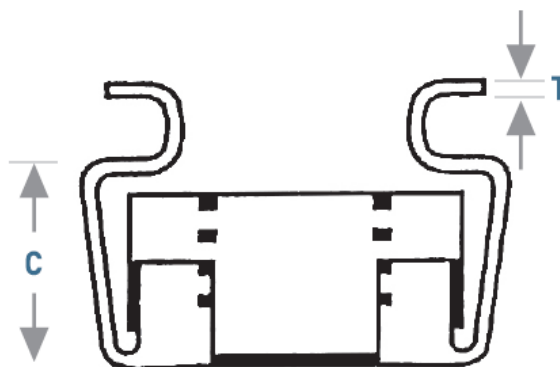
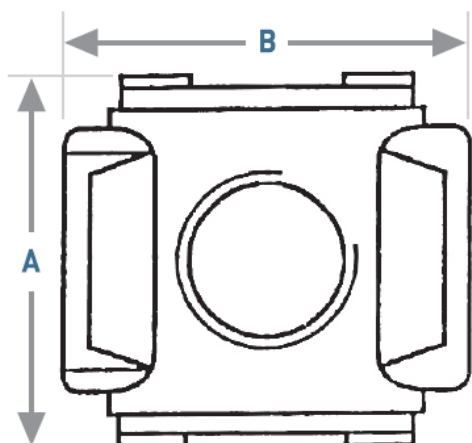
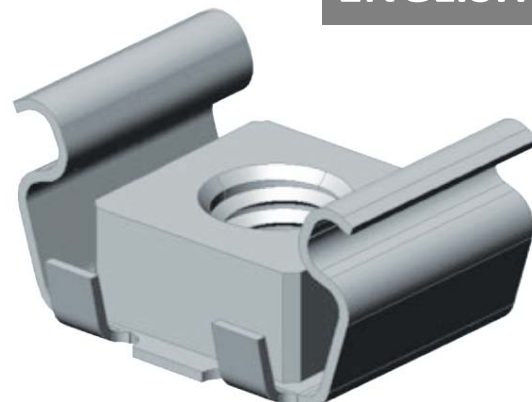
## Product Datasheet

ENGLISH

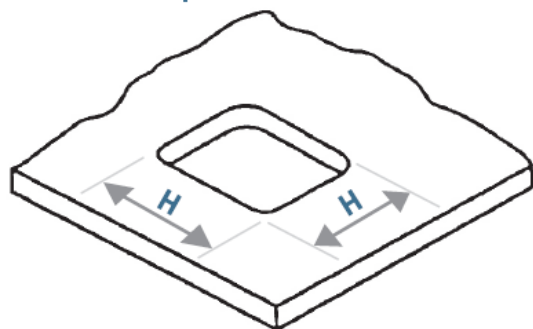
# Cage nuts 409 series

Suitable for blind locations; eliminates welding, clinching and staking.

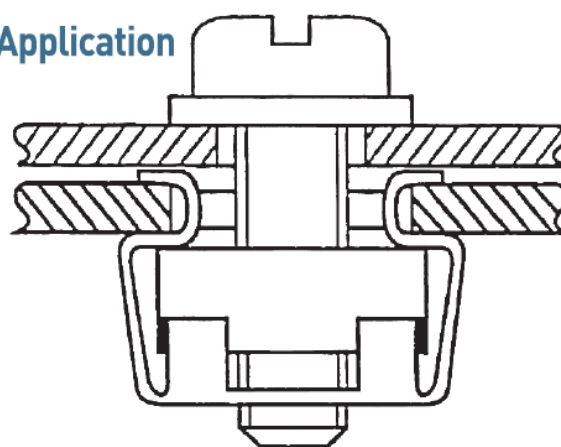
- Cage: High carbon steel
- Nut: Low carbon steel
- Standard finishes: K, L and Y
- Standard tolerances apply to all dimensions



Dimension of aperture



Application





RS Part No	Thread Size	Panel Range Inch	A mm	B mm	C mm	T mm	H mm	Standard Finish
8067742	M8	1.00/1.70	16.00	16.50	7.90	0.50	12.30	K,L and Y
8067745	M8	0.71/1.63	16.37	16.58	6.63	0.38	12.80	K,L and Y
8067749	M8	1.70/2.30	16.00	16.50	7.90	0.50	12.30	K,L and Y
8067758	M8	1.83/3.20	16.37	16.58	6.63	0.38	12.80	K,L and Y
8067751	M8	3.30/4.50	16.37	16.58	6.63	0.38	12.80	K,L and Y
8067755	M10	1.00/1.70	16.00	16.50	7.90	0.50	12.30	K,L and Y
8067764	M10	0.71/1.63	16.37	16.58	6.63	0.38	12.80	K,L and Y
8067767	M10	1.70/2.30	16.00	16.50	7.90	0.50	12.30	K,L and Y
8067761	M10	1.83/3.20	16.37	16.58	6.63	0.38	12.80	K,L and Y
8067770	M10	3.30/4.50	16.37	16.58	6.63	0.38	12.80	K,L and Y

\* Available in zinc and clear; or zinc and yellow

Standard finishes:

- K** Electro-plated zinc. Colourless/clear, chromatic passivation.
- L** Electro-plated zinc. Colour chromatic passivation.