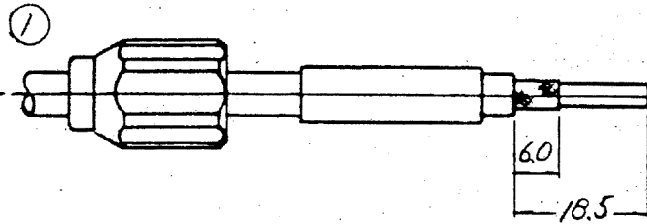
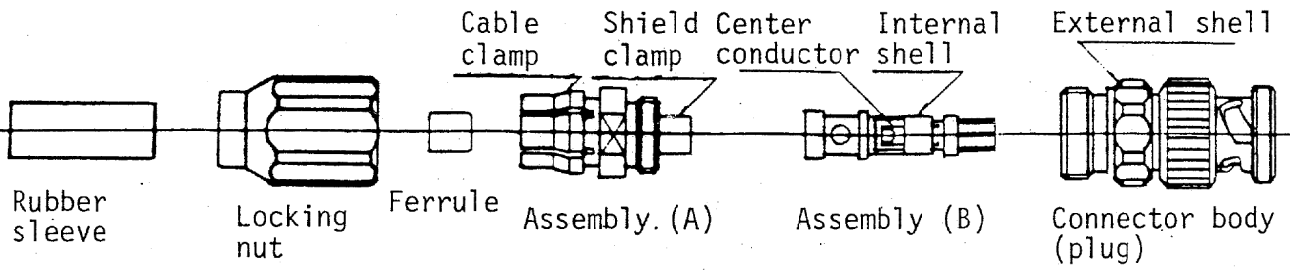
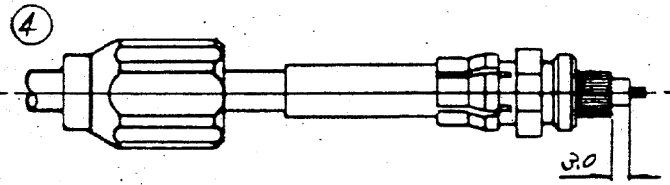




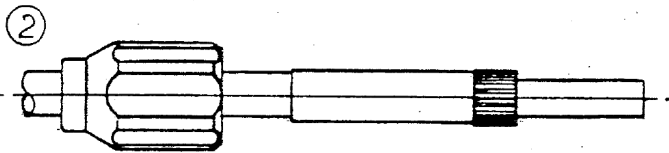
Cable used: ECX-1.5C-2VSV, ECX-1.50-2VSV



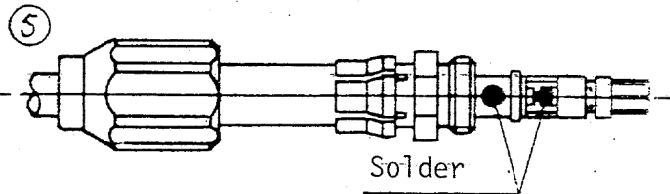
The rubber sleeve and locking nut are fitted over the cable and the outer sheath and shield are cut away as shown.



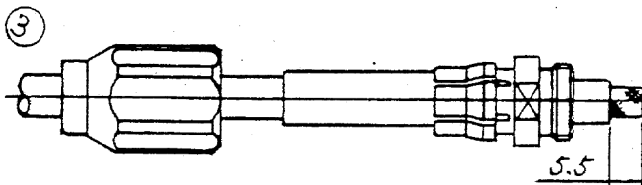
Roll back the internal sheath over the shield clamp and cut away the cable conductor.



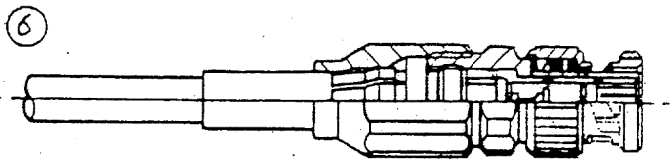
Fit the ferrule over the end of the external sheath and roll back the external shield. Next, slide the rubber sleeve onto the cable end.



Place the assembly (B) over the shield clamp and insert the center cable conductor into the center contact solder cup. Next, flow solder into the side hole of the external shell (i.e., towards the shield clamp) to solder the shield clamp to the internal shield and internal shell. Solder the cable center conductor to the center contact also. When the the assembly (B) is placed over and soldered to the shield clamp, care should be taken that mutual alignment is maintained between assemblies (A) and (B).



Slide assembly (A) over the cable and cut away the internal sheath at the shield plug end position.



Screw the connected cable completed in step 5 in and screw the locking nut onto the external shell.