

OPERATION INSTRUCTION

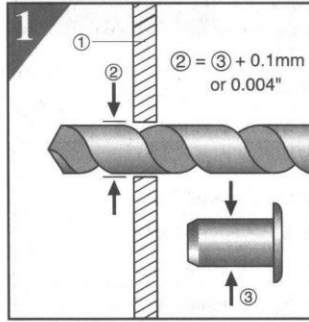
NEW PATENT

U.S.A. 5,729,880
GERMANY 297 09 807.1

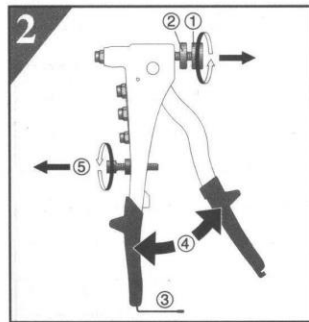
FRANCE 98 05023
R.O.C. 124684
WORLDWIDE PATENT PENDING

BRK01

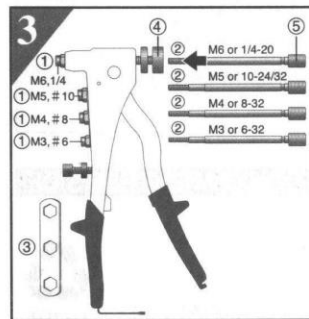
PARTS LIST ON REVERSE SIDE



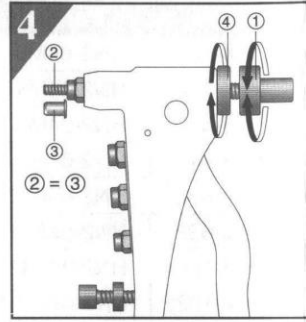
- 1) Drill a Hole on Workpiece ①, Hole diameter ② should be 0.1mm or 0.004" larger than Rivet Nut diameter ③.



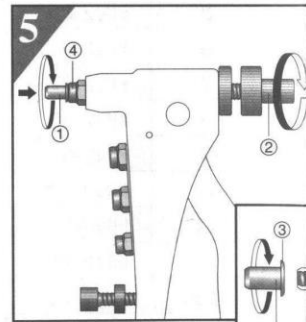
- 2) Still lock Tool Handles, turn up Adjusting Knob ① and Lock Nut ②, then loose Locking Tape (or Bead Chain Lock) ③ to open Tool Handles fully ④, and turn down the Stroke Bolt and Stroke Nut ⑤ to the lowest position.



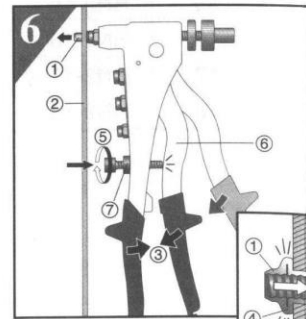
- 3) Select same size of Nosepiece ① and Threaded Mandrel ② as Rivet Nut threaded size, install Nosepiece ① by Wrench ③ and insert Threaded Mandrel ② into Adjusting Knob ④. The Threaded Mandrel Knob ⑤ should touch Adjusting Knob ④.



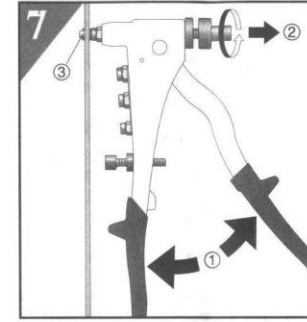
- 4) Rotate Adjusting Knob ① to adjust thread length ② of Threaded Mandrel to be same as Rivet Nut length ③, then turn down the Lock Nut ④ to lock Adjusting Knob ① position firmly.



- 5) Screw the Rivet Nut ① onto Threaded Mandrel by turning either Rivet Nut ① or Threaded Mandrel Knob ② until Rivet Nut head ③ touches Nosepiece ④.
The Rivet Nut end should be flush with the Threaded Mandrel end.



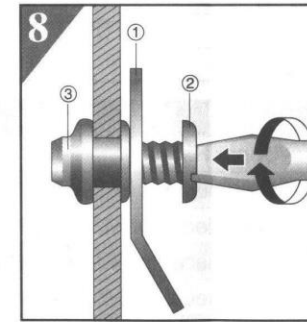
- 6) Insert the screwed Rivet Nut ① into the drilled Hole of Workpiece ②, squeeze Tool Handles ③ until Rivet Nut is installed firmly by forming a bulge ④ against the back of Workpiece ②; still hold Tool Handles ③ and adjust Stroke Bolt ⑤ up to touch Upper Handle ⑥, then turn up Stroke Nut ⑦ to lock Stroke Bolt ⑤. Now the proper Stroke is built up to protect the Rivet Nut threads and this Installation Tool as well.



- 7) Release Tool Handles ① fully and rotate Threaded Mandrel Knob ② to unscrew Threaded Mandrel from the installed Rivet Nut ③. The Rivet Nut threads are built up securely in the Workpiece.

NOTE

If the next installing Rivet Nut is same size as previous one, just repeat above 5) ~ 7) procedure. Do not need any adjustment!



- 8) Fasten an Object ① by screwing a Bolt or a Screw ② to the installed Rivet Nut ③.

NOTE

A proper Stroke ensures Rivet Nut threads to be installed securely, SO THE PILOT TEST IS ALWAYS RECOMMENDED BEFORE INSTALLING DIFFERENT SIZES OF RIVET NUT.