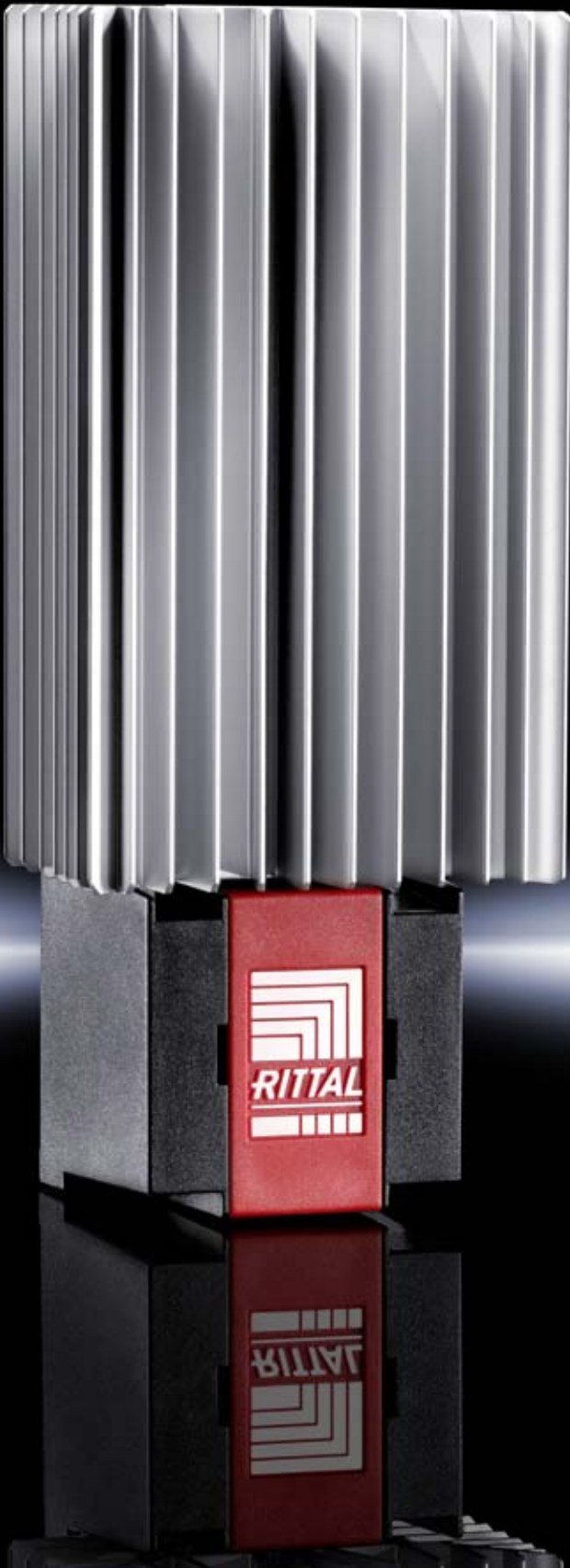


Enclosure heaters



Fast assembly

- Snap-fastening onto 35 mm support rails EN 50 022
- Direct screw-fastening onto the mounting plate



Energy-efficient design

- PTC technology
- Computational Fluid Dynamics (CFD)-assisted design for superior heating performance with the same construction size

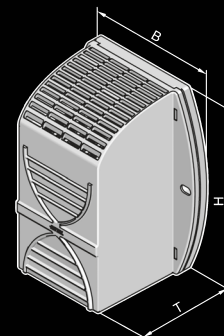
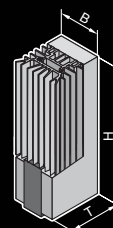


Output range

- without fan
10, 20, 30, 50, 75, 100, 150 W
- with fan
250, 400, 800 W



Enclosure heaters



Supply includes:

PTC heater with quick-fit terminal and assembly parts.

Note:

- Thermostat SK 3110.000 (see accessories) is recommended for precise temperature control in the enclosure.
- In order to prevent condensation on assemblies, hygrostat SK 3118.000 (see accessories) is recommended to regulate heating.
- In larger enclosures, even heat distribution is best achieved by installing several low-output heaters.
- The installation of heaters is generally advisable, even when using heat exchangers and cooling units, in order to prevent condensation.

B = Width
T = Depth

Without fan, continuous thermal output 10 – 150 W

Model No. SK		3105.310	3105.320	3105.330	3105.340	3105.350	3105.360	3105.370
Dimensions mm	W	45	45	64	64	64	90	90
	H	120	120	155	155	230	165	180
	D	46	46	56	56	56	75	75
Rated operating voltage V, Hz		110 – 240 V, 50/60 Hz						
Continuous thermal output at $T_u = 10^\circ\text{C}$		8 – 10 W	18 – 20 W	23 – 30 W	49 – 50 W	63 – 75 W	86 – 100 W	130 – 150 W
Pre-fuse T		2 A		4 A				
Accessories		Packs of						
Thermostat	1	3110.000						SK Cat. (hardcover), page 182
Hygrostat	1	3118.000						SK Cat. (hardcover), page 182
Temperature indicator/controller	1	3114.200						IN 2010, page 33

Special voltages available on request. We reserve the right to make technical modifications.

With fan, continuous thermal output 250 – 800 W

Model No. SK 110 V		3105.210	3105.220	3105.230
Model No. SK 230 V		3105.180	3105.190	3105.200
Dimensions mm	W	142	142	142
	H	170	170	170
	D	101	101	101
Rated operating voltage V, Hz		110 or 230 V, 50/60 Hz		
Continuous thermal output at $T_u = 10^\circ\text{C}$		250 W¹⁾	400 W¹⁾	800 W¹⁾
Pre-fuse gG for 110 V		4 A	6 A	10 A
Pre-fuse gG for 230 V		4 A	6 A	6 A
Accessories		Packs of		
Thermostat	1	3110.000		SK Cat. (hardcover), page 182
Hygrostat	1	3118.000		SK Cat. (hardcover), page 182
Temperature indicator/controller	1	3114.200		IN 2010, page 33

¹⁾ Output with fan.

Special voltages available on request. We reserve the right to make technical modifications.